

SC-2, 07 AUG 2025 to 04 SEP 2025

LONE STAR DEP CON
125.2 343.65
CTAF
122.7

RADAR and DME required.

NOTE: BELCHER Transition: For aircraft inbound to the JAN, MLU, and SHV terminal areas only.
NOTE: SOLDLO Transition: ATC assigned.

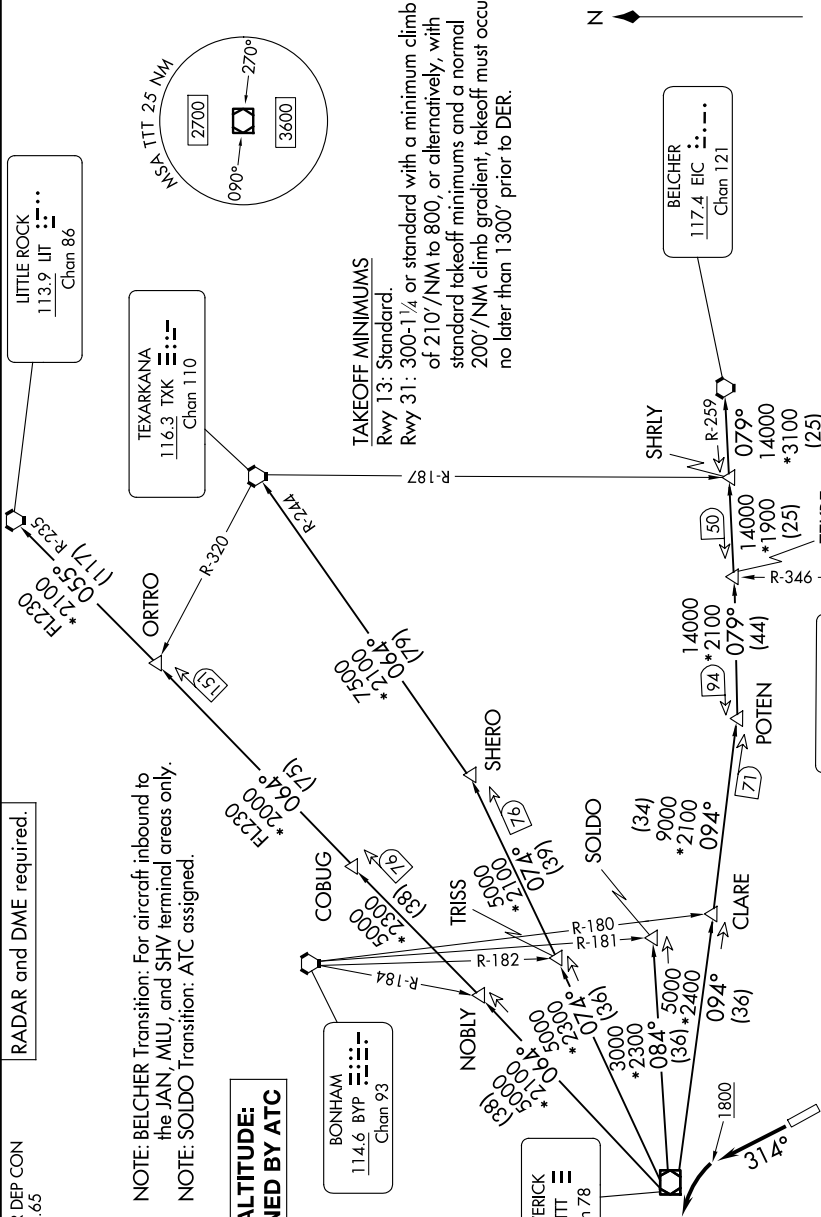
TOP ALTITUDE:
ASSIGNED BY ATC

BONHAM
114.6 BYP
Chan 93

MAVERICK
113.1 TTT
Chan 78

BEILCHER
117.4 EIC
Chan 121

GREGG COUNTY
112.9 GGG
Chan 76



(CONTINUED ON FOLLOWING PAGE)

NOTE: Chart not to scale

SC-2, 07 AUG 2025 to 04 SEP 2025