

WAAS
CH **72706**
W31A

APP CRS
313°

Rwy Idg
TDZE
Apt Elev
5118
807
808

RNAV (GPS) RWY 31

ATLANTA RGNL FALCON FLD (F^FC)

RNP APCH.

▼

▲

Circling Rwy 13 NA at night. Rwy 31 helicopter visibility reduction below ¾ SM NA. Inop table does not apply to LPV. For inop ALS, increase LNAV/VNAV Cat A/B visibility to 1½ SM. For uncompensated Baro-VNAV systems, LNAV/VNAV NA below -7°C or above 54°C.

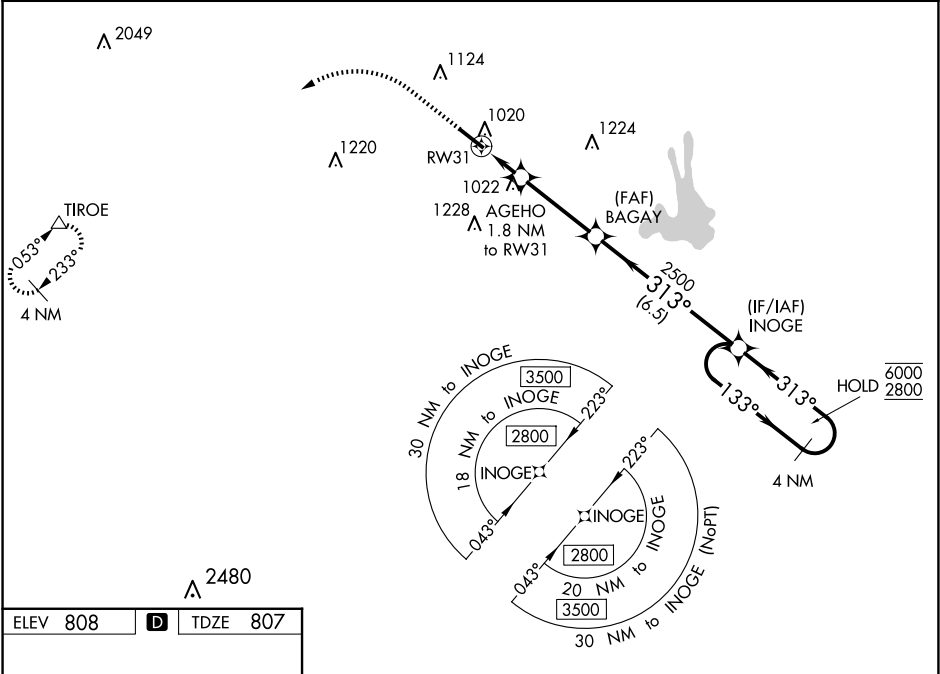
ODALS

●

⋮

MISSED APPROACH: Climb to 1500 then climbing left turn to 3500 direct TIROE and hold.

ASOS 118.525	ATLANTA APP CON 119.8 354.125	CLNC DEL 119.8	UNICOM 123.05 (CTAF) 0
------------------------	---	--------------------------	---



ELEV **808** **D** TDZE **807**

REIL Rwy 13 **0**

MIRL Rwy 13-31 **0**

313° to RW31

5/68 X 100

1500 3500 TIROE

VGSI and RNAV glidepath not coincident (VGSI Angle 3.00/TCH 45).

AGEHO 1.8 NM to RW31

BAGAY 2500

INOGE Holding Pattern

GP 3.00° TCH 38

RW31 1400

313°

133° 6000 2800

CATEGORY	A	B	C	D
LPV DA	1059-¾		252 (300-¾)	
LNAV/VNAV DA	1188-1		381 (400-1)	
LNAV MDA	1280-¾	473 (500-¾)	1280-1¼	473 (500-1¼)
C CIRCLING	1320-1	512 (600-1)	1440-1¾ 632 (700-1¾)	1540-2¼ 732 (800-2¼)

SE-4, 07 AUG 2025 to 04 SEP 2025

SE-4, 07 AUG 2025 to 04 SEP 2025