

LOC/DME I-FFC
111.95
Chan **56(Y)**

APP CRS
313°

Rwy Idg
TDZE **5118**
807
Apt Elev **808**

ILS or LOC RWY 31

ATLANTA RGNL FALCON FLD (F'F'C)

DME or ADF or RADAR required.

▼

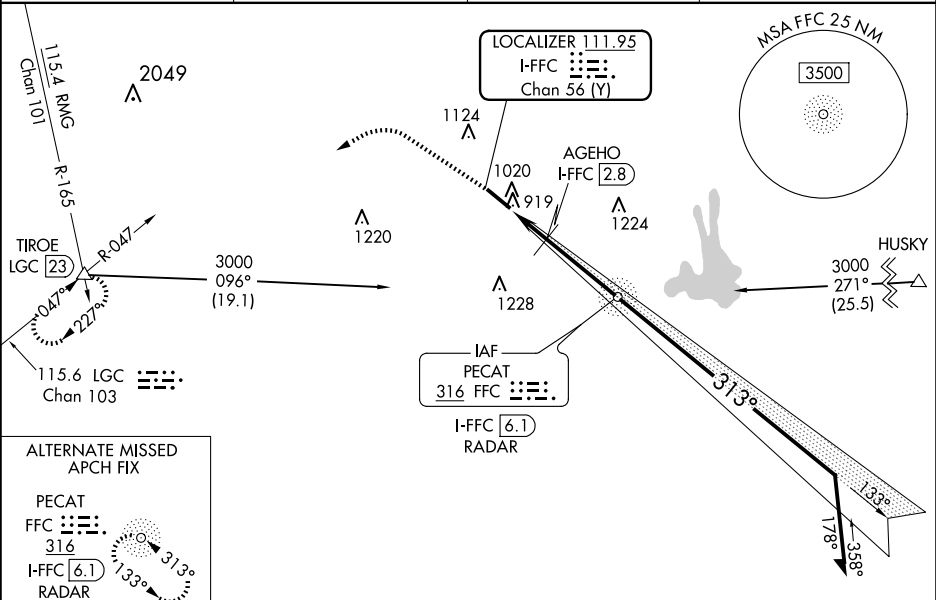
▲

Circling Rwy 13 NA at night. Rwy 31 helicopter visibility reduction below ¾ SM NA. Inop table does not apply to S-ILS 31 and to S-LOC 31 Cats C/D.

ODALS

MISSED APPROACH: Climb to 1700 then climbing left turn to 4000 on heading 275° and LGC VORTAC R-047 to TIROE INT/LGC 23 DME and hold.

ASOS 118.525	ATLANTA APP CON 119.8 354.125	CLNC DEL 119.8	UNICOM 123.05 (CTAF) 0
------------------------	---	--------------------------	----------------------------------



ELEV 808

D

TDZE 807

1700

4000

LGC R-047

TIROE

FFC NDB
PECAT
I-FFC 6.1
RADAR

VGSI and ILS glidepath not coincident (VGSI Angle 3.00/TCH 45).
Remain within 10 NM

AGEHO I-FFC 2.8

I-FFC 1

1320

2467

133°

313°

2500

2500

GS 3.00°
TCH 38

CATEGORY	A	B	C	D
S-ILS 31		1059-¾	252 (300-¾)	
S-LOC 31	1320-¾	513 (600-¾)	1320-1⅜	513 (600-1⅜)
CIRCLING	1320-1	512 (600-1)	1440-1¾ 632 (700-1¾)	1540-2¼ 732 (800-2¼)
AGEHO FIX MINIMUMS (DME REQUIRED)				
S-LOC 31	1180-¾	373 (400-¾)	1180-1	373 (400-1)
CIRCLING	1320-1	512 (600-1)	1440-1¾ 632 (700-1¾)	1540-2¼ 732 (800-2¼)

REIL Rwy 13

MIRL Rwy 13-31

FAF to MAP 5.1 NM

Knots	60	90	120	150	180
Min:Sec	5:06	3:24	2:33	2:02	1:42