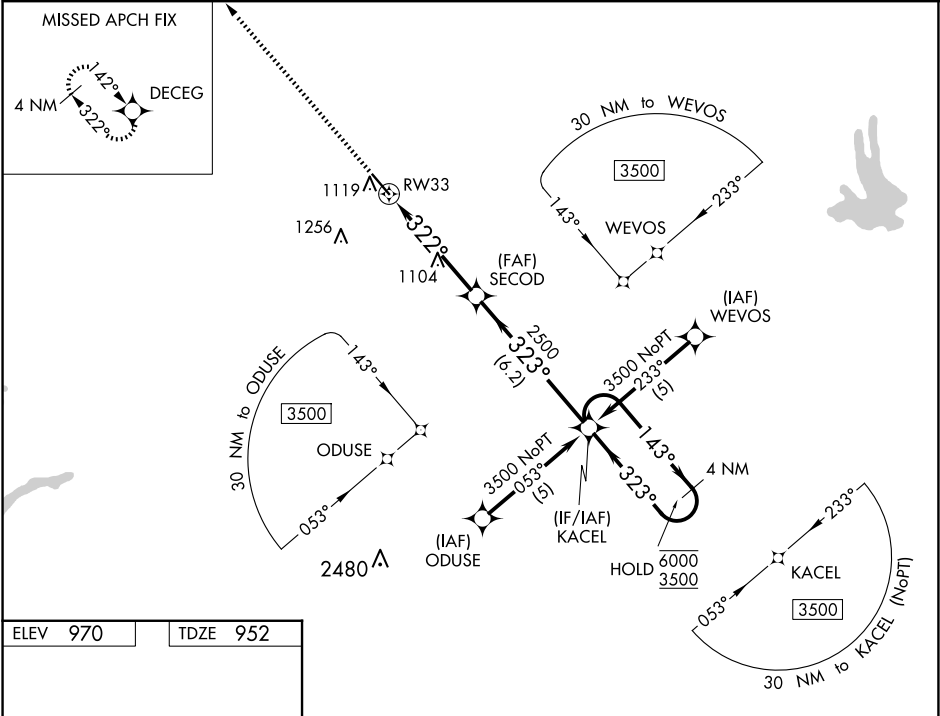


WAAS CH 77528 W33A	APP CRS 322°	Rwy Idg TDZE 952 Apt Elev 970
--	------------------------	---

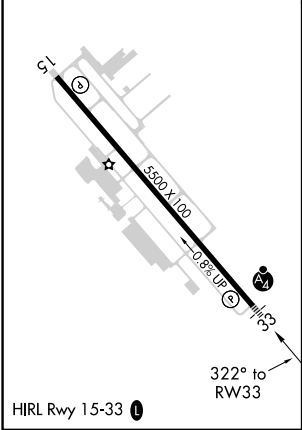
RNAV (GPS) RWY 33
NEWNAN COWETA COUNTY (C'CO)

RNP APCH. <div><div><div></div><div></div></div><div>Rwy 33 helicopter visibility reduction below ¾ SM NA. For uncompensated Baro-VNAV systems, LNAV/VNAV NA below -16°C or above 46°C. For inop ALS, increase LPV and LNAV/VNAV all Cats and LNAV Cats C/D visibilities to 1 ½ SM.</div></div>	MALSF <div><div></div><div></div></div>	MISSED APPROACH: Climb to 3500 direct DECEG and hold.
--	--	--

AWOS-3PT 118.975	ATLANTA APP CON 119.8 354.125	GCO 121.725	UNICOM 122.7 (CTAF) 0
----------------------------	---	-----------------------	---------------------------------



ELEV 970	TDZE 952
-----------------	-----------------



3500

↑

DECEG

VGSI and RNAV glidepath not coincident (VGSI Angle 3.00/TCH 49).

KACEL

4 NM Holding Pattern

323°

143°

6000

3500

GP 3.00°

TCH 40

322°

323°

2500

2500

1.2 NM

3.6 NM

6.2 NM

CATEGORY

LPV DA

LNAV/ VNAV DA

LNAV MDA

CIRCLING

A

B

C

D

1242-1

290 (300-1)

1286-1

334 (400-1)

1360-1

408 (400-1)

1420-1

450 (500-1)

1560-1½

590 (600-1½)

1560-2

590 (600-2)