

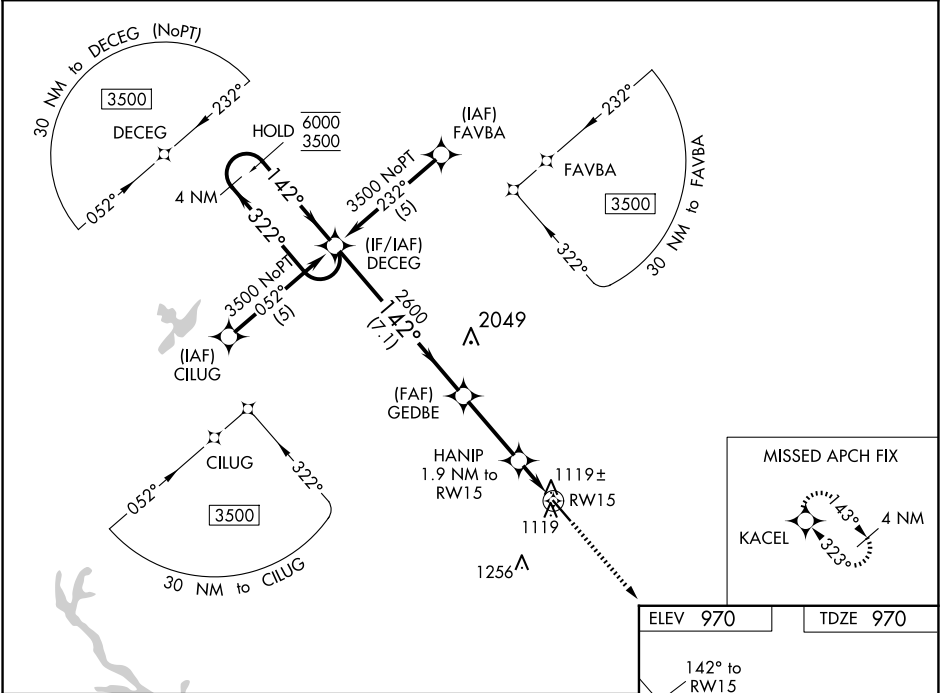
WAAS CH <b>70515</b> <b>W15A</b>	APP CRS <b>142°</b>	Rwy Idg TDZE <b>970</b> Apt Elev <b>970</b>
--	------------------------	---

RNAV (GPS) RWY 15

NEWNAN COWETA COUNTY (C'CO)

RNP APCH.	MISSED APPROACH: Climb to 3500 direct KACEL and hold.
<div><div>▼</div> Rwy 15 helicopter visibility reduction below <math>\frac{3}{4}</math> SM NA. For uncompensated Baro-VNAV systems, LNAV/VNAV NA below -16°C or above 47°C.</div>	

AWOS-3PT <b>118.975</b>	ATLANTA APP CON <b>119.8 354.125</b>	GCO <b>121.725</b>	UNICOM <b>122.7 (CTAF) 0</b>
----------------------------	---	-----------------------	---------------------------------



4 NM Holding Pattern		VGSI and RNAV glidepath not coincident (VGSI Angle 3.00/TCH 40).		3500	KACEL
DECEG		GEDBE		HANIP 1.9 NM to RW15	
6000 ← 322°		2600		*1.2 NM to RW15	
3500 → 142°		2600		RW15	
GP 3.00°		*1620		0.7	
TCH 56		7.1 NM		1.2 NM	
CATEGORY	A	B	C	D	
LPV DA	1300-1		330 (400-1)		
LNAV/VNAV DA	1389-1½		419 (500-1½)		
LNAV MDA	1380-1	410 (500-1)	1380-1¼	410 (500-1¼)	
CIRCLING	1420-1	450 (500-1)	1560-1½ 590 (600-1½)	1560-2 590 (600-2)	

