

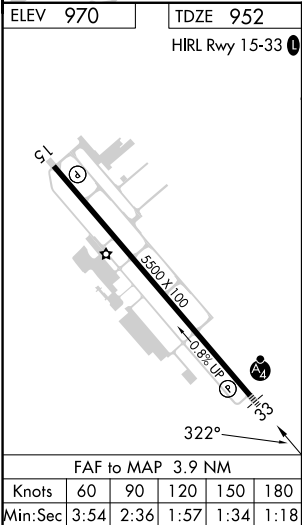
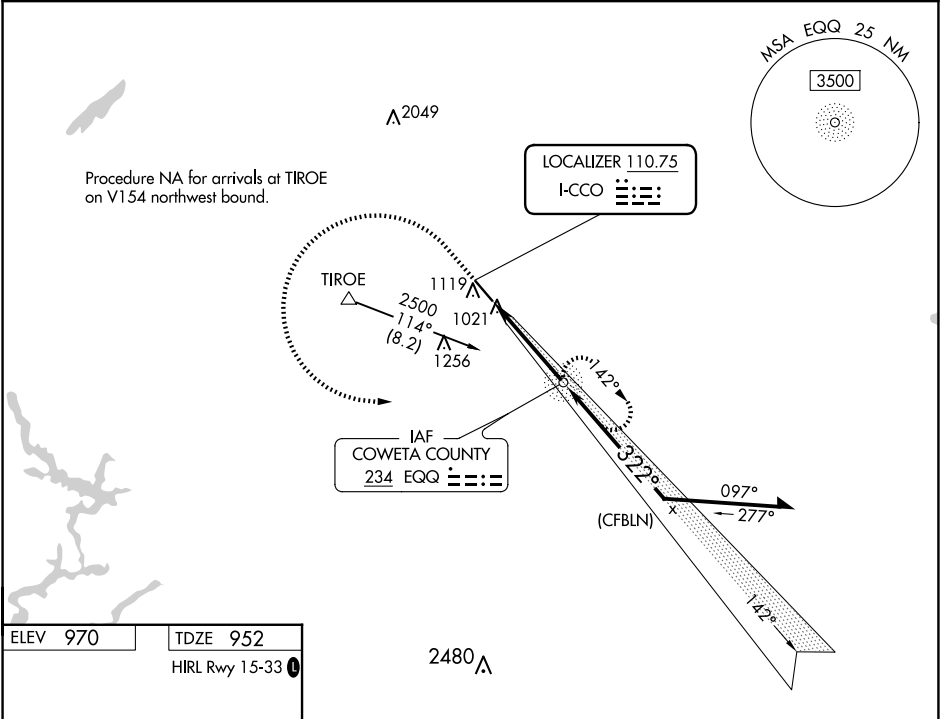
LOC I-CCO	APP CRS	Rwy Idg	5500
110.75	322°	TDZE	952
		Apt Elev	970

ILS or LOC RWY 33

NEWNAN COWETA COUNTY (CCO)

ADF required.	MALSF	MISSED APPROACH: Climb to 1800 then climbing left turn to 2500 direct EQQ NDB and hold, continue climb-in-hold to 2500.
<div><div></div><div></div></div> Rwy 33 helicopter visibility reduction below ¾ SM NA. Inop table does not apply to S-ILS 33.	<div><div></div><div></div></div>	

AWOS-3PT 118.975	ATLANTA APP CON 119.8 354.125	GCO 121.725	UNICOM 122.7 (CTAF) 0
---------------------	----------------------------------	----------------	--------------------------



1800	2500	EQQ	EQQ VGSI and ILS glidepath not coincident (VGSI Angle 3.00/TCH 49).			
<div></div>	<div></div>	<div></div>	Remain within 10 NM			
<div></div>			2208	142°	2500	
<div></div>			2300	322°		
<div></div>			3.9 NM			
CATEGORY	A	B	C	D	GS 3.00° TCH 44	
S-ILS 33	1202-¾		250 (300-¾)			
S-LOC 33	1340-¾	388 (400-¾)	1340-⅞	388 (400-⅞)		
<div></div> CIRCLING	1420-1	450 (500-1)	1560-1½ 590 (600-1½)	1560-2 590 (600-2)		