

| | | |
|--|------------------------|---|
| WAAS CH 93933 W29A | APP CRS 294° | Rwy Idg 5103 TDZE 579 Apt Elev 585 |
|--|------------------------|---|

RNAV (GPS) RWY 29

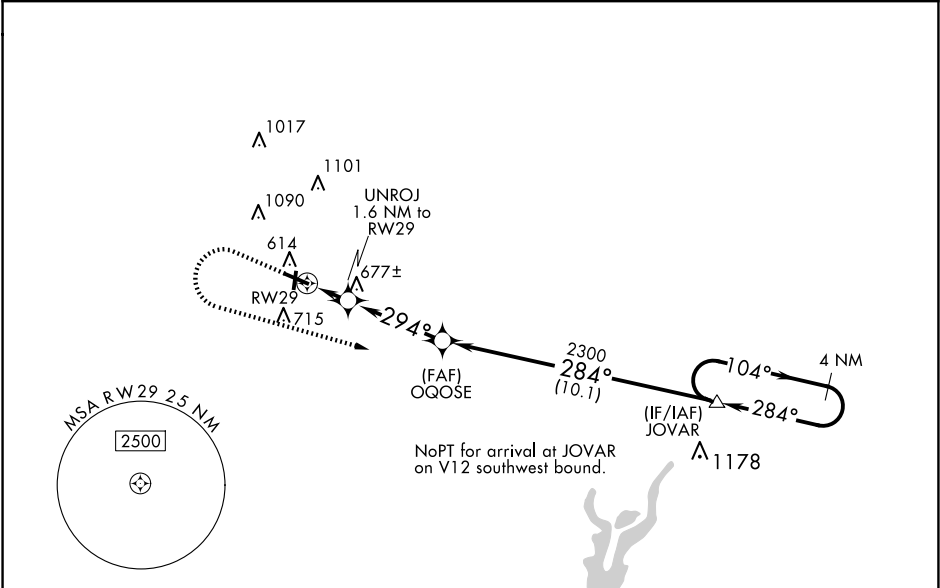
EFFINGHAM COUNTY RGNL (1H2)

RNP APCH.

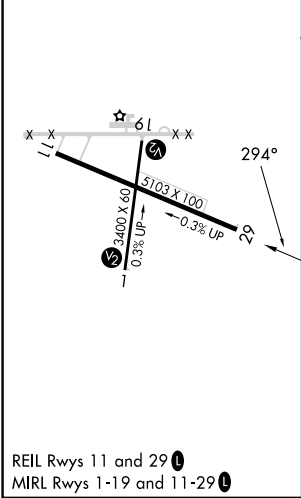
Rwy 29 helicopter visibility reduction below $\frac{3}{4}$ SM NA. Straight-in Rwy 1 NA at night, Circling Rwy 1, 19 NA at night. For uncompensated Baro-VNAV systems, LNAV/VNAV below -16°C or above 54°C . Baro-VNAV and VDP NA when using Olney-Noble altimeter setting. When local altimeter setting not received, use Olney-Noble altimeter setting and increase all DA 77 feet and all MDA 80 feet; increase LPV all Cats and Circling Cat C/D visibility $\frac{1}{4}$ SM, increase LNAV/VNAV all Cats visibility $\frac{3}{8}$ SM.

MISSED APPROACH:
Climb to 1800 then climbing left turn to 2300 direct JOVAR and hold.

| | | |
|----------------------------|---|-----------------------------------|
| AWOS-3PT 118.375 | KANSAS CITY CENTER 124.3 269.15 | UNICOM 122.725 (CTAF) 1 |
|----------------------------|---|-----------------------------------|



| | |
|-----------------|-----------------|
| ELEV 585 | TDZE 579 |
|-----------------|-----------------|



| | | | | |
|--------------|--|-----------------------|--|--|
| | 1800 | 2300 | JOVAR | |
| | ↑ | ↶ | △ | |
| | *LNAV only. | | | |
| | UNROJ 1.6 NM to RW29 | | | |
| | *1 NM to RW29 | | | |
| | RW29 | | | |
| | *1120 | | | |
| | OQOSE 2300 | | | |
| | JOVAR 2300 | | | |
| | 4 NM Holding Pattern | | | |
| | GP 3.00° TCH 45 | | | |
| | 1 NM 0.6 NM 3.7 NM 10.1 NM | | | |
| CATEGORY | A | B | C | D |
| LPV DA | 838- $\frac{7}{8}$ 259 (300- $\frac{7}{8}$) | | | |
| LNAV/VNAV DA | 859- $\frac{7}{8}$ 280 (300- $\frac{7}{8}$) | | | |
| LNAV MDA | 940-1 361 (400-1) | | | |
| CIRCLING | 1020-1 435 (500-1) | 1140-1 555 (600-1) | 1440-2 $\frac{1}{2}$ 855 (900-2 $\frac{1}{2}$) | 1440-2 $\frac{3}{4}$ 855 (900-2 $\frac{3}{4}$) |