

WAAS
CH **99439**
W11A

APP CRS
114°

Rwy Idg
TDZE **585**
Apt Elev **585**

RNAV (GPS) RWY 11

EFFINGHAM COUNTY RGNL (1H2)

RNP APCH.

▼

▲

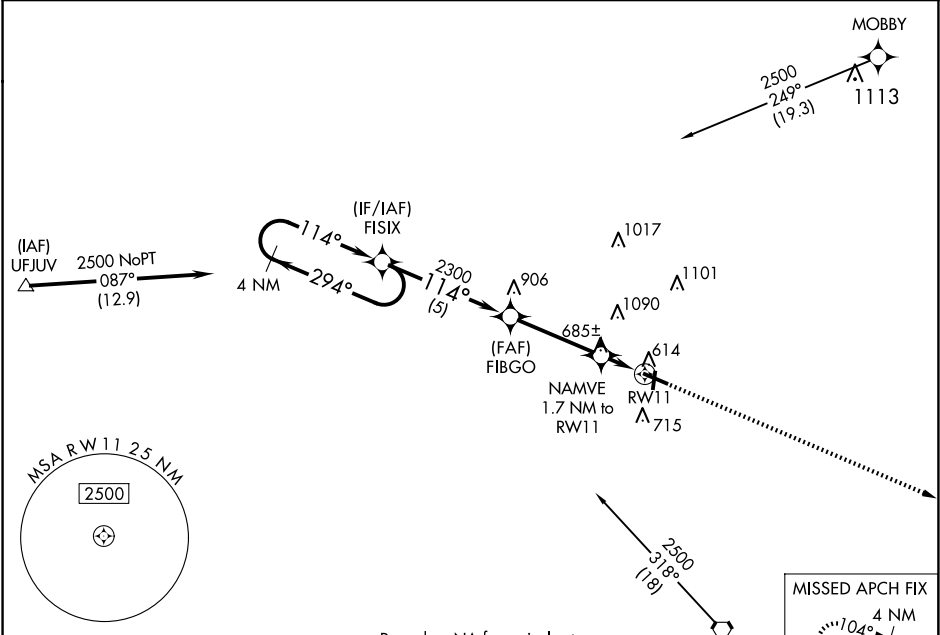
For uncompensated Baro-VNAV systems, LNAV/VNAV NA below -16°C or above 54°C. Straight-in Rwy 1 NA at night, Circling Rwy 1, 19 NA at night.

MISSED APPROACH: Climb to 2300 direct JOVAR and hold.

AWOS-3PT
118.375

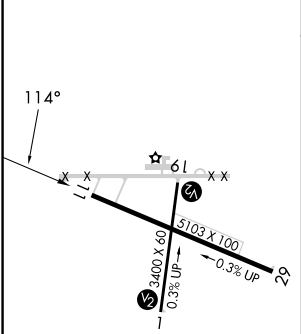
KANSAS CITY CENTER
124.3 269.15

UNICOM
122.725 (CTAF) 0



ELEV **585**

TDZE **585**



REIL Rwy 11 and 29 0

MIRL Rwy 1-19 and 11-29 0

Procedure NA for arrivals at BIB VORTAC on V12 eastbound.				
<div>4 NM Holding Pattern</div> <div>FISIX</div> <div>FIBGO</div> <div>NAMVE 1.7 NM to RWY 11</div> <div>BIBLE GROVE BIB</div> <div>JOVAR</div> <div>* LNAV only.</div>				
CATEGORY	A	B	C	D
LPV DA		835-1	250 (300-1)	
LNAV/VNAV DA		856-1	271 (300-1)	
LNAV MDA		940-1	355 (400-1)	
<div>CIRCLING</div>	1020-1 435 (500-1)	1140-1 555 (600-1)	1440-2½ 855 (900-2½)	1440-2¾ 855 (900-2¾)