

APP CRS
009°

Rwy Idg
TDZE
Apt Elev

3400
580
585

RNAV (GPS) RWY 1
EFFINGHAM COUNTY RGNL (1H2)

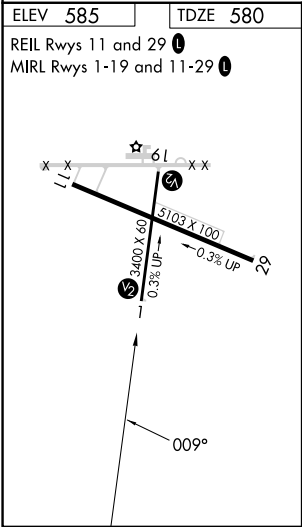
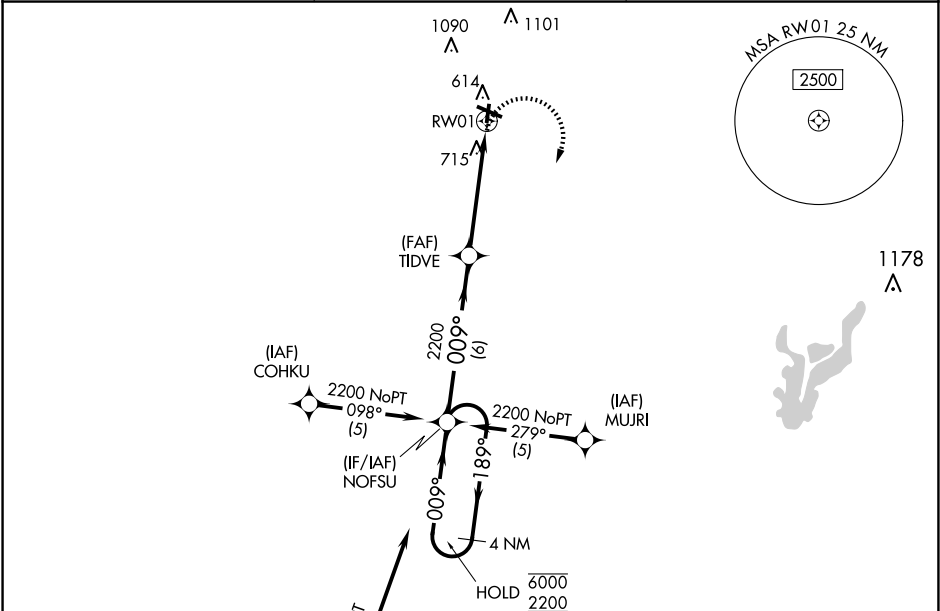
RNP APCH - GPS.

▼

Rwy 1 helicopter visibility reduction below 1 SM NA. Straight-in Rwy 1 NA at night, Circling Rwy 1, 19 NA at night. When local altimeter setting not received, use Olney-Noble altimeter setting and increase all MDA 80 feet and increase LNAV visibility Cat C ¼ SM, and Circling visibility Cat C ¼ SM.

MISSED APPROACH: Climbing right turn to 2200 direct NOFSU and hold.

AWOS-3PT 118.375	KANSAS CITY CENTER 124.3 269.15	UNICOM 122.725 (CTAF) 0
---------------------	------------------------------------	----------------------------



Procedure NA for arrivals at CRATS on V52 southwest bound.

<p>4 NM Holding Pattern</p>	<p>VGSI and descent angles not coincident (VGSI Angle 4.00/TCH 40).</p>		<p>2200</p>	<p>NOFSU</p>
<p>6000 2200</p> <p>←189° 009°→</p>	<p>NOFSU</p>	<p>TIDVE</p> <p>2200</p> <p>3.04° TCH 50</p>	<p>RW01</p>	
<p>6 NM</p>		<p>4.9 NM</p>		
CATEGORY	A	B	C	D
LNAV MDA	1020-1	440 (500-1)	1020-1¼ 440 (500-1¼)	NA
CIRCLING	1020-1 435 (500-1)	1140-1 555 (600-1)	1440-2½ 855 (900-2½)	NA