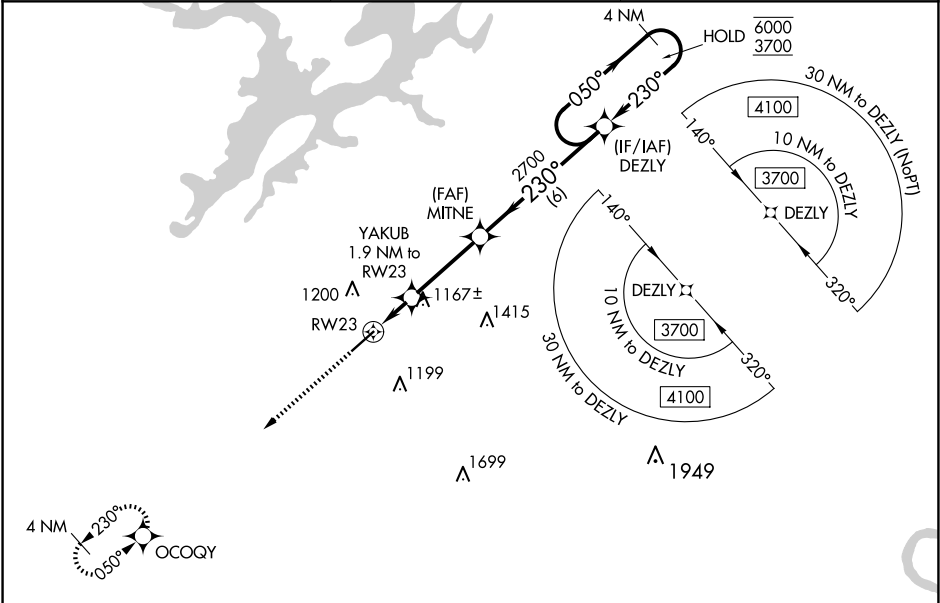


WAAS CH <b>99604</b> <b>W23A</b>	APP CRS <b>230°</b>	Rwy Idg TDZE Apt Elev	<b>6114</b> <b>1032</b> <b>1032</b>
--	------------------------	-----------------------------	---

RNAV (GPS) RWY 23

ALBETVILLE RGNL/THOMAS J BRUMLIK FLD (B'F'Z)

RNP APCH - GPS. <div><div>T</div><div>A</div></div> Rwy 23 helicopter visibility reduction below ¾ SM NA. For uncompensated Baro-VNAV systems, LNAV/VNAV NA below -17°C or above 54°C.		MISSED APPROACH: Climb to 3700 direct OCOQY and hold, continue climb-in-hold to 3700.
AWOS-3PT <b>119.575</b>	BIRMINGHAM APP CON <b>125.45 279.65</b>	UNICOM <b>123.0 (CTAF) 0</b>



ELEV 1032

TDZE 1032

3700 OCOQY

DEZLY

4 NM Holding Pattern

YAKUB 1.9 NM to RW23

MITNE 2700

DEZLY

6000 3700

GP 3.00° TCH 42

1.2 NM

0.8 NM

3.2 NM

6 NM

CATEGORY	A	B	C	D
LPV DA	1282-¾ 250 (300-¾)			
LNAV/VNAV DA	1437-1½ 405 (500-1½)			
LNAV MDA	1440-1 408 (500-1)	1440-1½ 408 (500-1½)		
CIRCLING	1480-1 448 (500-1)	1500-1 468 (500-1)	1500-1½ 468 (500-1½)	1680-2 648 (700-2)

REIL Rwy 23 0

MIRL Rwy 5-23 0