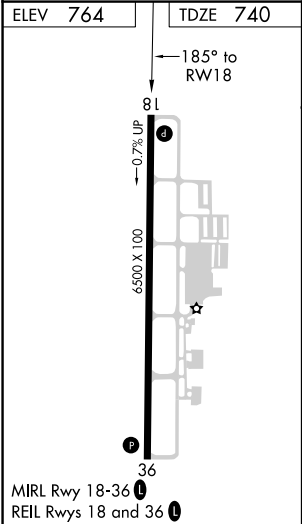
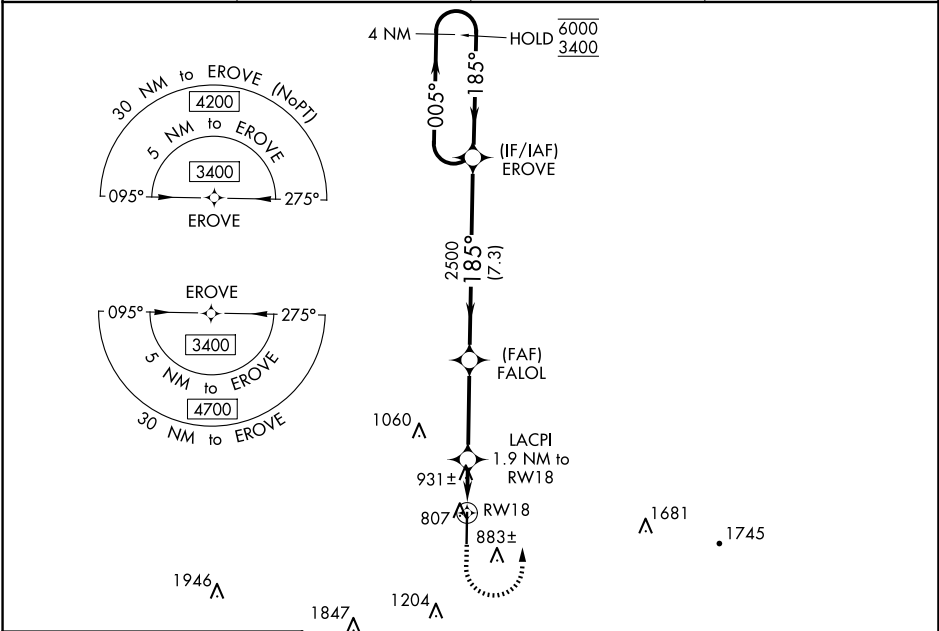


WAAS CH 86501 W18A	APP CRS 185°	Rwy Idg TDZE 740 Apt Elev 764
--	------------------------	---

RNAV (GPS) RWY 18
HUNTSVILLE EXEC TOM SHARP JR FLD (MDQ)

RNP APCH.		MISSED APPROACH: Climb to 1500 then climbing left turn to 3400 direct EROVE and hold.
▼ ▲ Rwy 18 helicopter visibility reduction below ¾ SM NA. For uncompensated Baro-VNAV systems, procedure NA below -16°C or above 54°C.		

AWOS-3PT 120.0	HUNTSVILLE APP CON ★ 125.6 354.1	GCO 121.725	UNICOM 123.0 (CTAF) 0
--------------------------	--	-----------------------	---------------------------------



ELEV 764		TDZE 740	
1500		3400	
↑		↘	
*LNAV only.		LACPI 1.9 NM to RW18	
*1.4 NM to RW18		FALOL 2500	
1.4 NM		0.5 NM	
0.5 NM		3.6 NM	
3.6 NM		7.3 NM	
CATEGORY		A	
LPV DA		940-¾	
LNAV/VNAV DA		1250-1¾	
LNAV MDA		1200-1 460 (500-1)	
CIRCLING		1260-1 496 (500-1)	
		1560-2¼ 796 (800-2¼)	
		2000-3 1236 (1300-3)	

SE-4, 07 AUG 2025 to 04 SEP 2025

SE-4, 07 AUG 2025 to 04 SEP 2025