

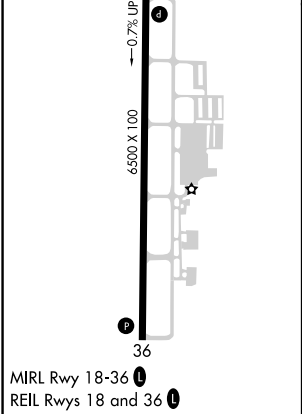
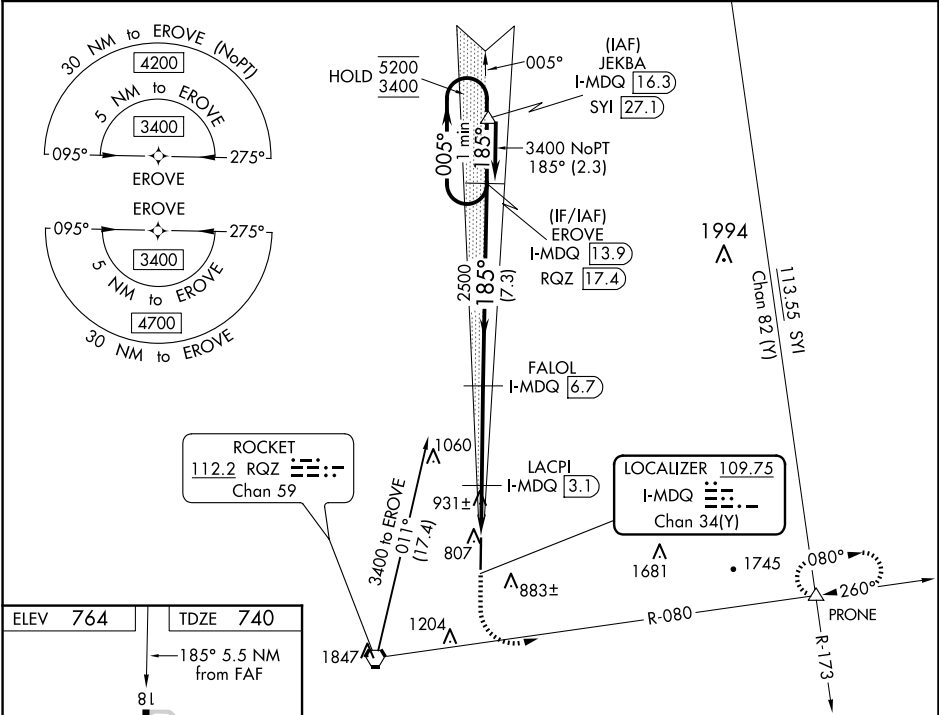
LOC/DME I-MDQ 109.75 Chan 34 (Y)	APP CRS 185°	Rwy Idg TDZE 740 Apt Elev 764
--	------------------------	---

ILS or LOC RWY 18

HUNTSVILLE EXEC TOM SHARP JR FLD (MDQ)

DME or RNAV 1- GPS required.	MISSED APPROACH: Climb to 1200 then climbing left turn to 4000 on heading 120° and on RQZ VORTAC R-080 to PRONE INT and hold, continue climb-in-hold to 4000.
<div><div>▼</div><div>▲</div></div> Rwy 18 helicopter visibility reduction below ¾ SM NA.	

AWOS-3PT 120.0	HUNTSVILLE APP CON ★ 125.6 354.1	GCO 121.725	UNICOM 123.0 (CTAF) 0
--------------------------	--	-----------------------	--



1200	4000	RQZ R-080	PRONE	EROVE I-MDQ 13.9	One Minute Holding Pattern
*LOC only.	*I-MDQ 2.6	LACPI I-MDQ 3.1	FALOL I-MDQ 6.7	EROVE I-MDQ 13.9	005°→ 5200 ←185° 3400
I-MDQ 1.2	I-MDQ 2.6	LACPI I-MDQ 3.1	FALOL I-MDQ 6.7	EROVE I-MDQ 13.9	GS 3.00° TCH 43
1.4	0.5 NM	3.6 NM	7.3 NM		
CATEGORY	A	B	C	D	
S-ILS 18	940-¾	200 (200-¾)			
S-LOC 18	1200-1	460 (500-1)			
CIRCLING	1260-1	496 (500-1)	1560-2¼ 796 (800-2¼)	2000-3 1236 (1300-3)	

SE-4, 07 AUG 2025 to 04 SEP 2025

SE-4, 07 AUG 2025 to 04 SEP 2025