

VOR/DME GLH <b>114.25</b> Chan <b>89</b> (Y)	APP CRS <b>035°</b>	Rwy Idg TDZE Apt Elev <b>140</b>	<b>N/A</b> <b>N/A</b> <b>140</b>
--	------------------------	---	--

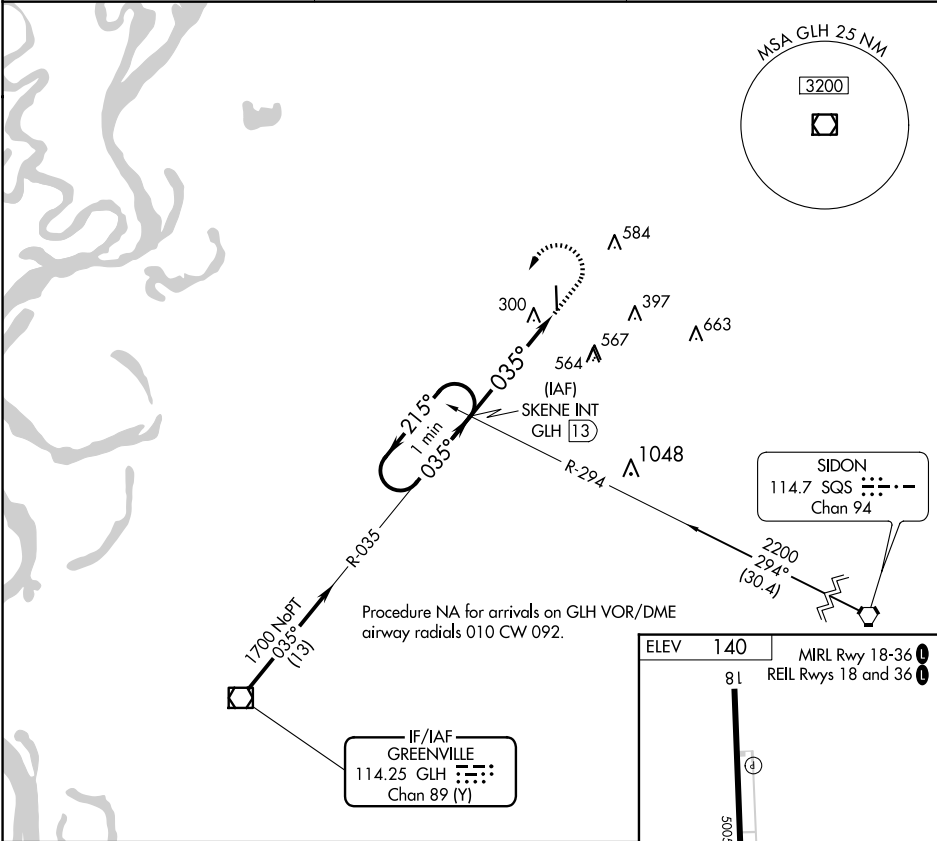
VOR-A

CLEVELAND MUNI (RNV)

When local altimeter setting not received, use Greenville altimeter setting and increase all MDA 60 feet.

MISSED APPROACH: Climb to 1000 then climbing left turn to 1700 on GLH VOR/DME R-035 to SKENE INT/GLH 13 DME and hold.

AWOS-3PT <b>124.175</b>	MEMPHIS CENTER <b>135.875 269.35</b>	UNICOM <b>122.725</b> (CTAF) <b>0</b>
----------------------------	---	--



One Minute Holding Pattern

SKENE INT GLH 13

1000 1700 GLH R-035

SKENE INT GLH 13

1700 21.5° 035° 035° 4.9 NM

ELEV 140 MRL Rwy 18-36 REIL Rwys 18 and 36

81 5005 X 75 36 035°

CATEGORY	A	B	C	D	FAF to MAP 4.9 NM					
CIRCLING	880-1	740 (800-1)	900-2¼	900-2½	Knots	60	90	120	150	180
			760 (800-2¼)	760 (800-2½)	Min:Sec	4:54	3:16	2:27	1:58	1:38

SC-4, 07 AUG 2025 to 04 SEP 2025

SC-4, 07 AUG 2025 to 04 SEP 2025