

22223

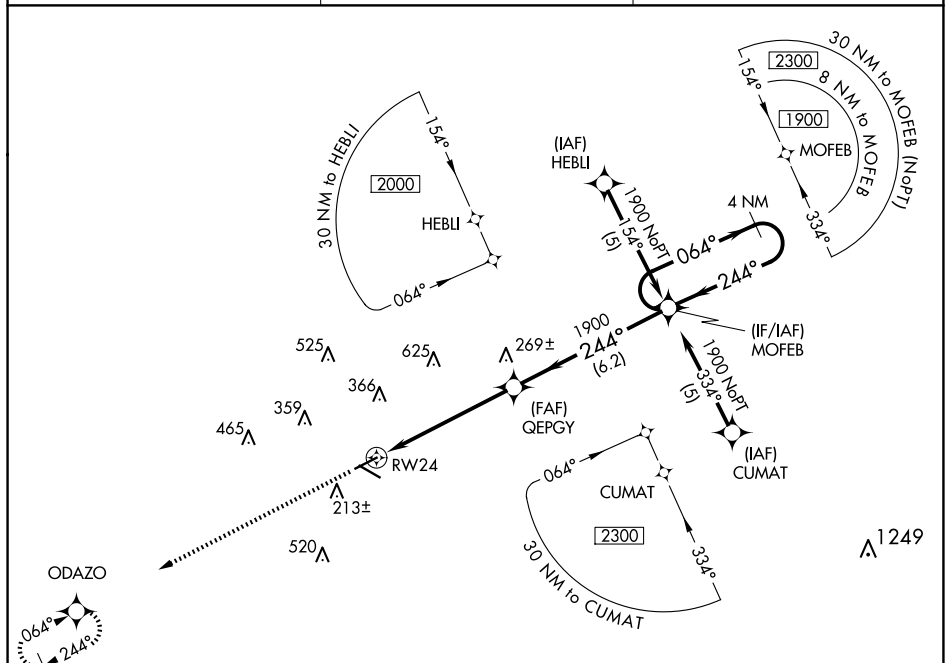
RNAV (GPS) RWY 24
BREWTON MUNI (12J)

T When local altimeter setting not received use Pensacola altimeter setting
A NA and increase all MDA 100 feet; increase LNAV Cats C and D visibility
¼ SM. Procedure NA at night.

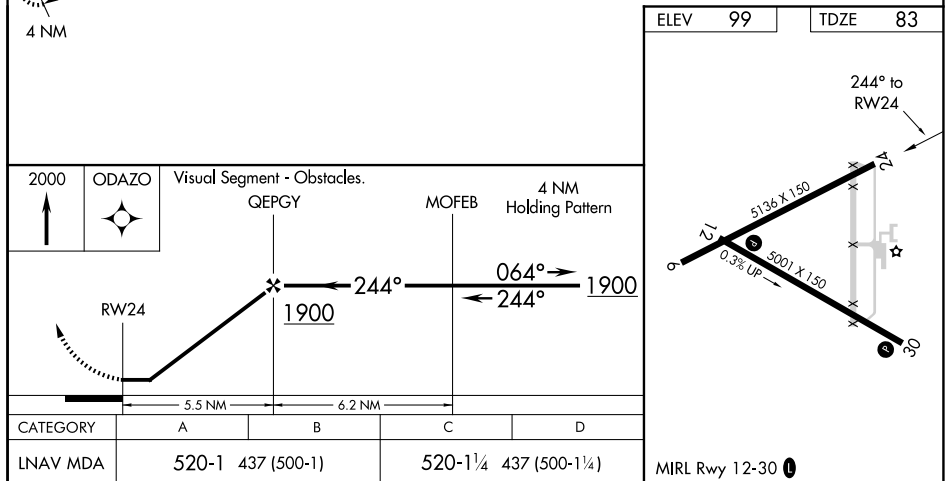
MISSED APPROACH: Climb to 2000 direct ODAZO and hold.

PENSACOLA APP CON
127.35 291.625

UNICOM
122.725 (CTAF) **L**



SE-4, 07 AUG 2025 to 04 SEP 2025



BREWTON MUNI (12J)
RNAV (GPS) RWY 24