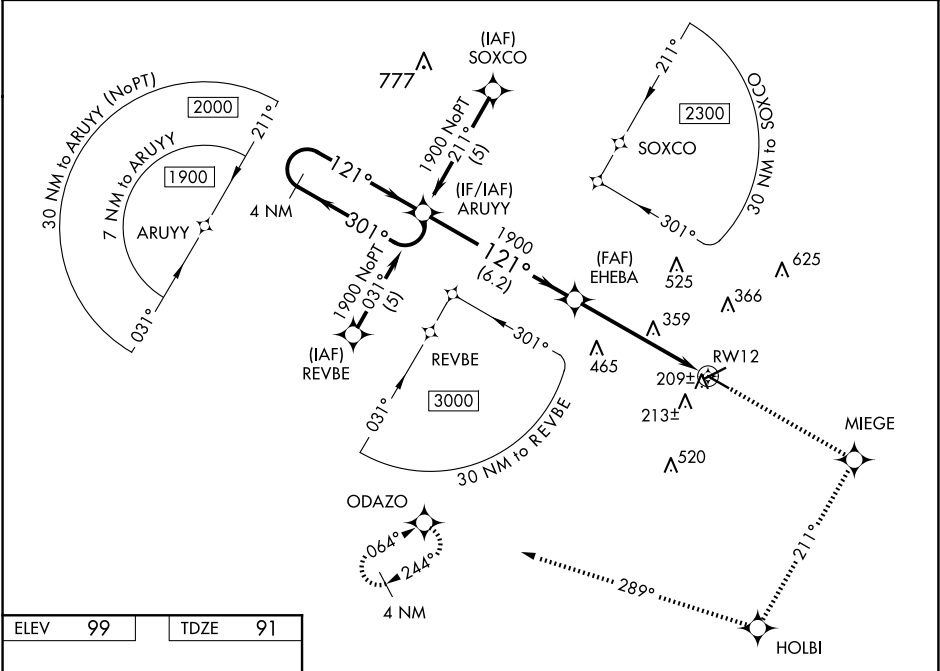


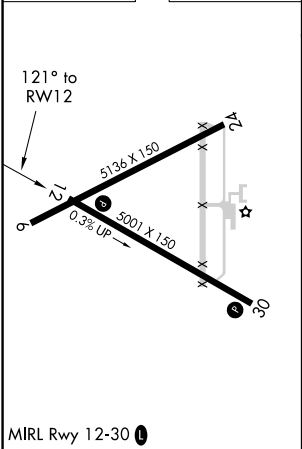
WAAS CH 53416 W12A	APP CRS 121°	Rwy Idg TDZE Apt Elev	5001 91 99
--	------------------------	-----------------------------	---------------------------------------

RNAV (GPS) RWY 12
BREWTON MUNI(12J)

RNP APCH. ▼ ▲ NA Baro-VNAV NA when using Pensacola altimeter setting. For uncompensated Baro-VNAV systems, LNAV/VNAV NA below -15°C or above 48°C. When local altimeter setting not received, use Pensacola altimeter setting; increase LPV DA to 425 feet; increase LNAV/VNAV DA to 563 feet; increase all MDAs 100 feet and LPV visibility all Cats, LNAV/VNAV visibility all Cats and LNAV Cats C and D ¼ SM. VDP NA when using Pensacola altimeter setting.		MISSED APPROACH: Climb to 2000 direct MIEGE and right turn on track 211° to HOLBI and on track 289° to ODAZO and hold.
AWOS-3PT 119.325	PENSACOLA APP CON 127.35 291.625	UNICOM 122.725 (CTAF) ①



ELEV 99	TDZE 91
---------	---------



VGSI and RNAV glidepath not coincident (VGSI Angle 3.25/TCH 48).		2000	MIEGE	HOLBI	ODAZO
4 NM Holding Pattern ARUYU		↑	✧	tr 211°	✧
1900 301° 121° 1900		✧	✧	✧	✧
GP 3.00° TCH 46		✧	✧	✧	✧
6.2 NM 3.9 NM 1.6 NM		✧	✧	✧	✧
CATEGORY	A	B	C	D	
LPV DA	341-1		250 (300-1)		
LNAV/VNAV DA	479-1½		388 (400-1½)		
LNAV MDA	640-1 549 (600-1)		640-1½ 549 (600-1½)		