

APP CRS
346°

Rwy Idg
3503

TDZE
665

Apt Elev
665

RNAV (GPS) RWY 35

ONTONAGON COUNTY/SCHUSTER FLD (OGM)

RNP APCH - GPS.

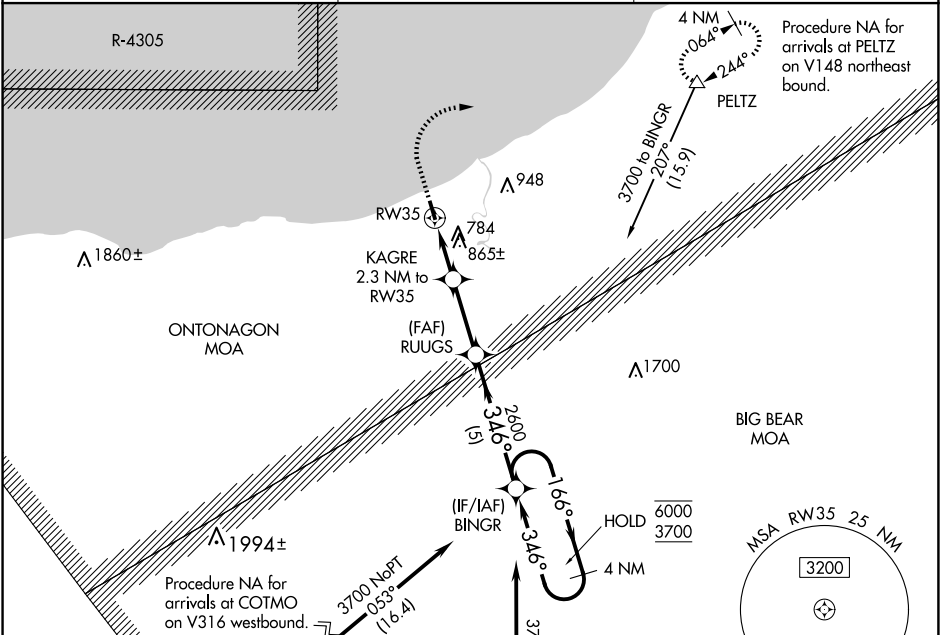
▼

▲ NA

Rwy 35 helicopter visibility reduction below 1 SM NA.
Procedure NA at night. Use CMX altimeter setting.

MISSED APPROACH: Climb to 1300 then climbing right turn to 3700 direct PELTZ and hold, continue climb-in-hold to 3700.

CMX ASOS 125.675	MINNEAPOLIS CENTER 133.55 379.1	CTAF 122.9 0
----------------------------	---	------------------------



ELEV 665

TDZE 665

1

0.78 NM

3503 X 75

35

346°

MIRL Rwy 17-35 0

REIL Rws 17 and 35 0

1300	3700	PELTZ	VGSi and descent angles not coincident (VGSi Angle 3.50/TCH 25).		4 NM Holding Pattern
RUUGS		BINGR	166°	6000	3700
KAGRE 2.3 NM to RW35		2600	346°	346°	
RW35		1560	2.3 NM	2.8 NM	5 NM
CATEGORY	A	B	C	D	
LNAV MDA	1280-1	615 (700-1)	1280-1¾ 615 (700-1¾)	NA	
CIRCLING	1320-1	655 (700-1)	1420-2¼ 755 (800-2¼)	NA	

EC-1, 07 AUG 2025 to 04 SEP 2025

EC-1, 07 AUG 2025 to 04 SEP 2025