

LOC/DME I-OCW

110.9

Chan **46**

APP CRS

045°

Rwy Idg

5000

TDZE

35

Apt Elev

37

LOC RWY 5

WASHINGTON-WARREN (OCW)

ADF required.

▼

▲ NA

Circling Rwy 17 NA at night. When local altimeter setting not received, use Greenville altimeter setting and increase all MDAs 60 feet.
Rwy 5 helicopter visibility reduction below ¾ SM NA.

MISSED APPROACH: Climb to 1000, then climbing right turn to 1600 direct RNW NDB and hold.

AWOS-3

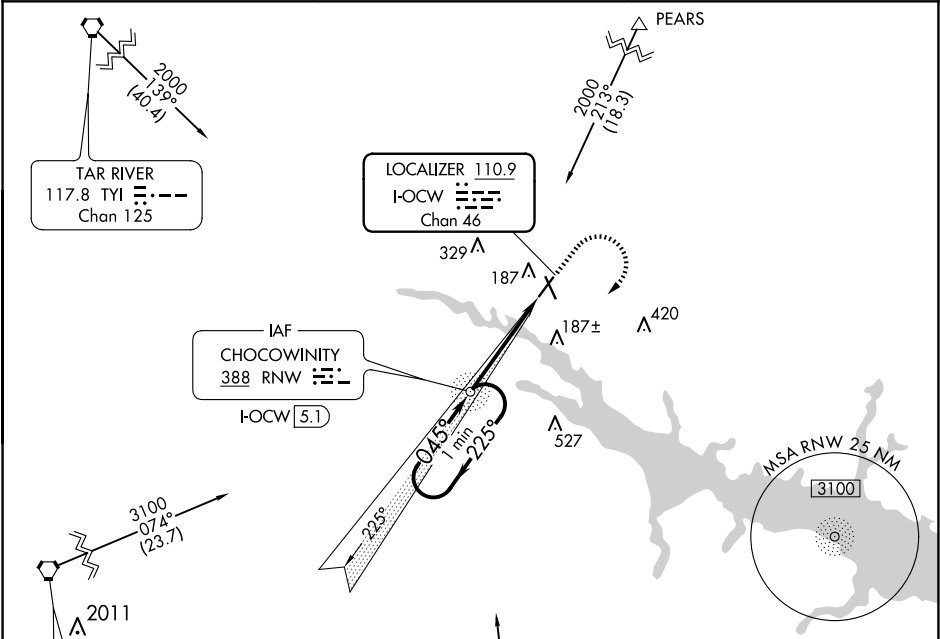
120.175

CHERRY POINT APP CON

119.35 377.175

UNICOM

122.7(CTAF) **0**



ELEV 37

TDZE 35

Missed approach diagram details: 1000, 1600, RNW, One Minute Holding Pattern, VGSI and descent angles not coincident (VGSI Angle 3.00/TCH 46), 225°, 045°, 1600, 2.9 NM, 1.3, 2.1, 0.9, 3.41° TCH 46, 045° 4.2 NM from FAF.

CATEGORY	A	B	C	D
S-5	480-1	445 (500-1)	480-1⅓	445 (500-1⅓)
CIRCLING	540-1	503 (600-1)	640-1¾ 603 (700-1¾)	780-2½ 743 (800-2½)

REIL Rwy 5 and 23 **0**

MIRL Rwys 5-23 **0**

FAF to MAP 4.2 NM

Knots	60	90	120	150	180
Min:Sec	4:12	2:48	2:06	1:41	1:24

SE-2, 07 AUG 2025 to 04 SEP 2025

SE-2, 07 AUG 2025 to 04 SEP 2025