

WAAS CH 86510 W35A	APP CRS 342°	Rwy Idg 5003 TDZE 121 Apt Elev 121
--	------------------------	---

RNAV (GPS) RWY 35
NATCHITOCHES RGNL (I/E/R)

RNP APCH.

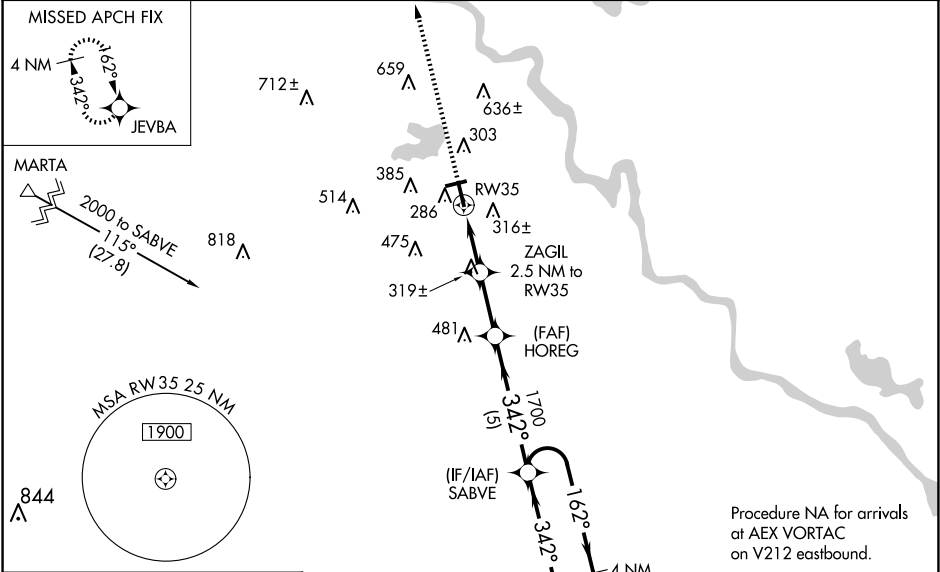
⚠ Inop table does not apply to LPV all Cats, and LNAV Cats A and B. Baro-VNAV NA when using Alexandria Intl altimeter setting. For uncompensated Baro-VNAV systems, LNAV/VNAV NA below -15°C or above 54°C. Helicopter visibility reduction below ¾ SM NA. When local altimeter setting not received, use Alexandria Intl altimeter setting: Increase LPV DA to 462 feet; increase LNAV/VNAV DA to 577 feet and visibility all Cats ¼ SM; increase all MDA 100 feet and LNAV Cat C visibility ¼ SM and Circling Cat C visibility ½ SM. For inoperative ODALS, increase LNAV/VNAV all Cats visibility ½ mile.

ODALS

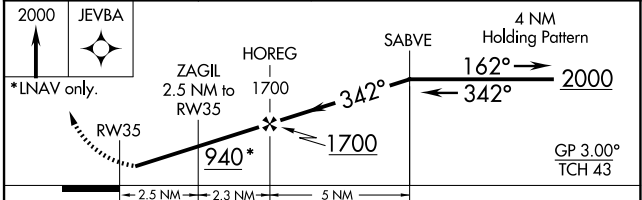
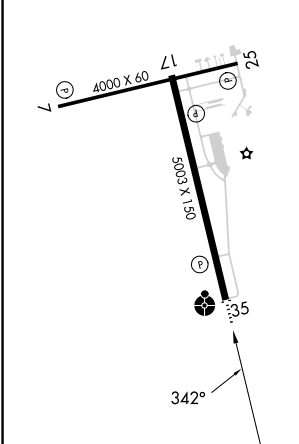


MISSED APPROACH:
Climb to 2000 direct
JEVBA and hold.

AWOS-3 119.025	POLK APP CON 125.4 302.2	GCO 135.075	UNICOM 122.8 (CTAF)
--------------------------	------------------------------------	-----------------------	-------------------------------



ELEV 121	TDZE 121
MIRL Rwy 7-25 and 17-35	REIL Rwy 7 and 17



CATEGORY	A	B	C	D
LPV DA	371-1	250 (300-1)		NA
LNAV/VNAV DA	486-1½	365 (400-1½)		NA
LNAV MDA	580-1	459 (500-1)	580-1½ 459 (500-1½)	NA
CIRCLING	680-1 559 (600-1)	740-1 619 (700-1)	860-2 739 (800-2)	NA