

WAAS CH 77810 W17A	APP CRS 162°	Rwy ldg 5003 TDZE 117 Apt Elev 121
--	------------------------	---

RNAV (GPS) RWY 17

NATCHITOCHES RGNL (IER)

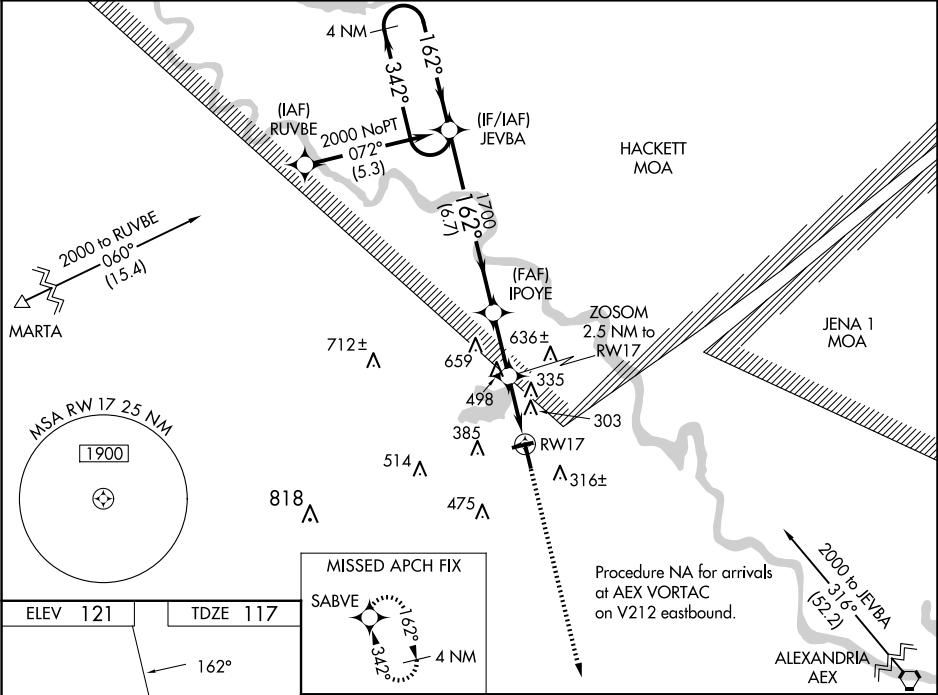
RNP APCH.

▼ For uncompensated Baro-VNAV systems, LNAV/VNAV NA below -15°C or above 54°C.

▲ Visibility reduction by helicopters NA. When local altimeter setting not received, use Alexandria Intl altimeter setting: Increase LPV DA to 458 feet and visibility all Cats ½ SM; increase LNAV/VNAV DA to 749 feet and visibility all Cats ¾ SM; increase all MDA 100 feet and LNAV Cat C visibility ¾ SM and Circling Cat C visibility ½ SM. Baro-VNAV and VDP NA when using Alexandria Intl altimeter setting.

MISSED APPROACH: Climb to 2000 direct SABVE and hold.

AWOS-3 119.025	POLK APP CON 125.4 302.2	GCO 135.075	UNICOM 122.8 (CTAF) 0
--------------------------	------------------------------------	-----------------------	---------------------------------



ELEV 121	TDZE 117	VGSi and RNAV glidepath not coincident (VGSi Angle 3.00/TCH 45).				2000	SABVE
		4 NM Holding Pattern				2000	SABVE
		GP 3.00° TCH 45				2000	SABVE
		JEVBA				2000	SABVE
		IPOYE				2000	SABVE
		ZOSOM 2.5 NM to RW17				2000	SABVE
		*1.4 NM to RW17				2000	SABVE
		RW17				2000	SABVE
		*940				2000	SABVE
		6.7 NM				2000	SABVE
		2.3 NM				2000	SABVE
		1.1				2000	SABVE
		1.4				2000	SABVE
		CATEGORY				2000	SABVE
		A				2000	SABVE
		B				2000	SABVE
		C				2000	SABVE
		D				2000	SABVE
		NA				2000	SABVE
		LPV DA				2000	SABVE
		367-3/4 250 (300-3/4)				2000	SABVE
		LNAV/VNAV DA				2000	SABVE
		658-1 7/8 541 (600-1 7/8)				2000	SABVE
		LNAV MDA				2000	SABVE
		620-1 503 (500-1) 620-1 3/8 503 (500-1 3/8)				2000	SABVE
		CIRCLING				2000	SABVE
		800-1 679 (700-1) 860-2 739 (800-2)				2000	SABVE