

LOC I-IER <u>110.5</u>	APP CRS 342°	Rwy Idg TDZE Apt Elev	5003 121 121
----------------------------------	------------------------	-----------------------------	---

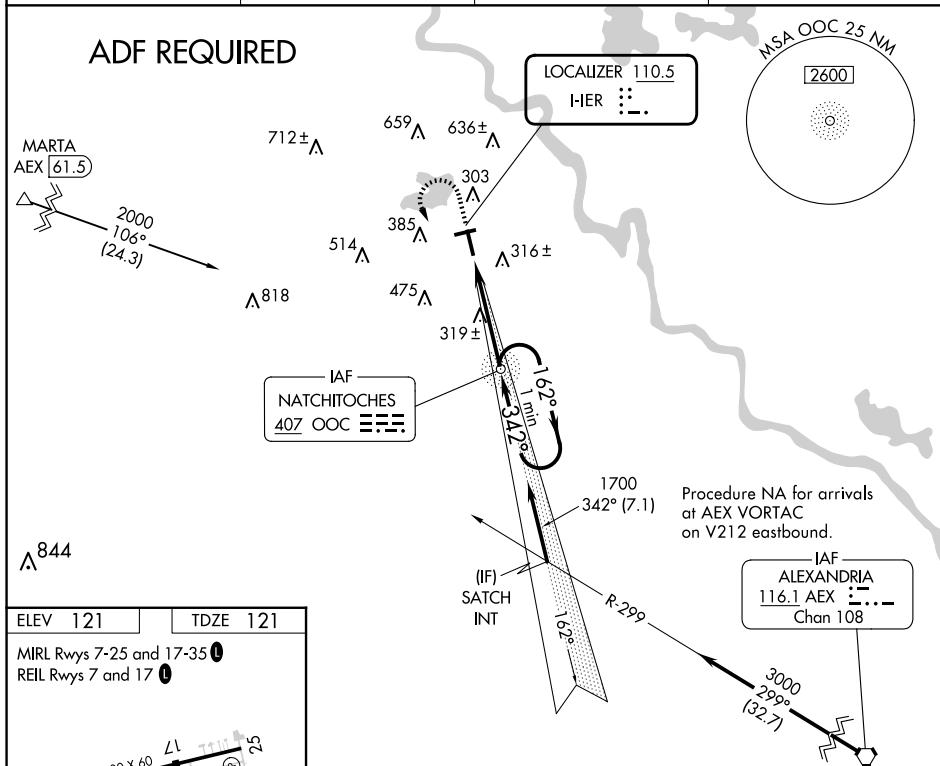
LOC RWY 35
NATCHITOCHES RGNL (TER)

V
A NA Helicopter visibility reduction below $\frac{3}{4}$ SM NA. When local altimeter setting not received, use Alexandria Intl altimeter setting: increase all MDA 100 feet and S-35 Cat C visibility $\frac{1}{4}$ SM and Circling Cat C visibility $\frac{1}{2}$ SM. For inop ODALS when using Alexandria Intl altimeter setting, increase S-35 Cat C visibility $\frac{1}{8}$ mile. Inop table does not apply to S-35 Cat A/B. ADF required.

ODALS



AWOS-3 119.025	POLK APP CON 125.4 302.2	GCO 135.075	UNICOM 122.8 (CTAF) ①
--------------------------	------------------------------------	-----------------------	---------------------------------



ELEV 121 TDZE 121

MIRL Rwy 7-25 and 17-35
REIL Rwy 7 and 17

FAF to MAP 4.2 NM					
Knots	60	90	120	150	180
Min:Sec	4:12	2:48	2:06	1:41	1:24

VGSI and descent angles not coincident
(VGSI Angle 3.00/TCH 43).

OOC NDB

One Minute Holding Pattern

2000

162° →

← 342°

1700

342°

≤ 3.43°
TCH 43

4.2 NM

CATEGORY	A	B	C	D
S-35	580-1	459 (500-1)	580-1½ 459 (500-1½)	NA
CIRCLING	680-1 559 (600-1)	740-1 619 (700-1)	860-2 739 (800-2)	NA