

WAAS CH 62805 W35A	APP CRS 350°	Rwy Idg TDZE 756 Apt Elev 763
--	------------------------	---

RNAV (GPS) RWY 35

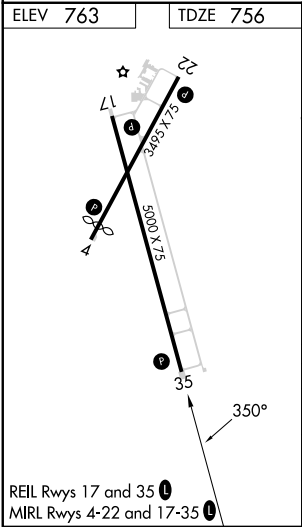
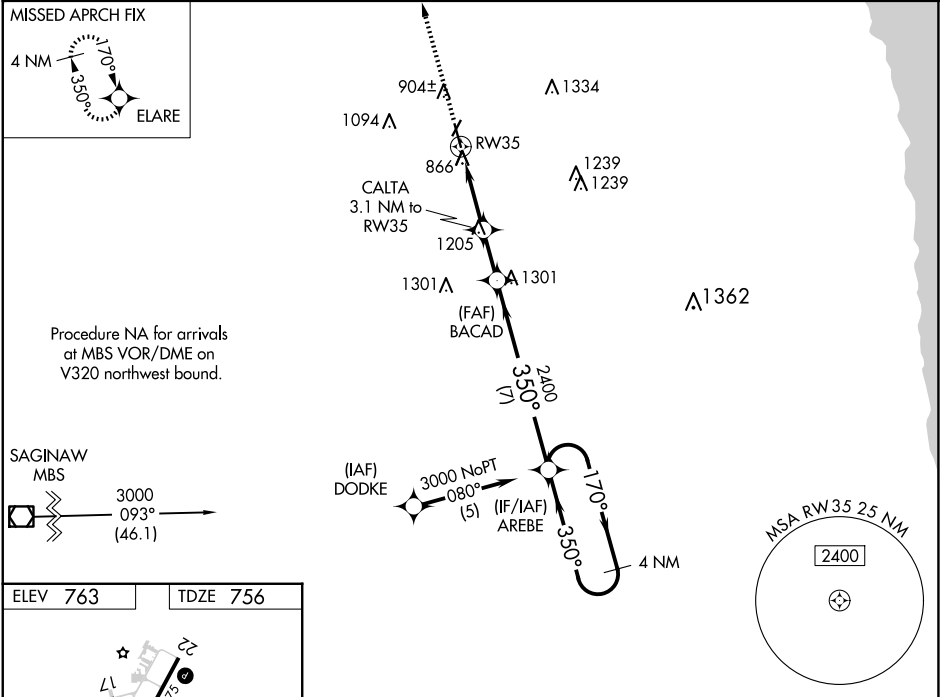
HURON COUNTY MEML (BAX)

RNP APCH.

For uncompensated Baro-VNAV systems, LNAV/VNAV NA below -16°C or above 54°C. When local altimeter setting not received, use MBS Init altimeter setting and increase all DA 129 feet and all MDA 140 feet; increase LPV all Cats and LNAV Cat C visibility ¾ mile. Rwy 35 helicopter visibility reduction below ¾ SM NA. VDP and Baro/VNAV NA when using MBS Init altimeter setting.

MISSED APPROACH: Climb to 3000 direct ELARE and hold.

AWOS-3 118.6	CLEVELAND CENTER 127.7 290.425	UNICOM 123.075 (CTAF) 0
------------------------	--	-----------------------------------



3000	ELARE	VGSI and RNAV glidepath not coincident (VGSI Angle 3.00/TCH 41).			4 NM Holding Pattern
* LNAV only		CALTA 3.1 NM to RW35	BACAD 2400	AREBE	170° → 3000
RW35		* 1.1 NM to RW35	* 1780	2400	GP 3.00° TCH 40
1.1 NM		2 NM	1.9 NM	7 NM	
CATEGORY	A	B	C	D	
LPV DA	1113-1¼	357 (400-1¼)		NA	
LNAV/VNAV DA	1154-1½	398 (400-1½)		NA	
LNAV MDA	1520-1 764 (800-1)	1520-1¼ 764 (800-1¼)	1520-2½ 764 (800-2½)	NA	

EC-1, 07 AUG 2025 to 04 SEP 2025

EC-1, 07 AUG 2025 to 04 SEP 2025