

APP CRS
213°

Rwy ldg
TDZE
763

Apt Elev
763

RNAV (GPS) RWY 22

HURON COUNTY MEML (BAX)

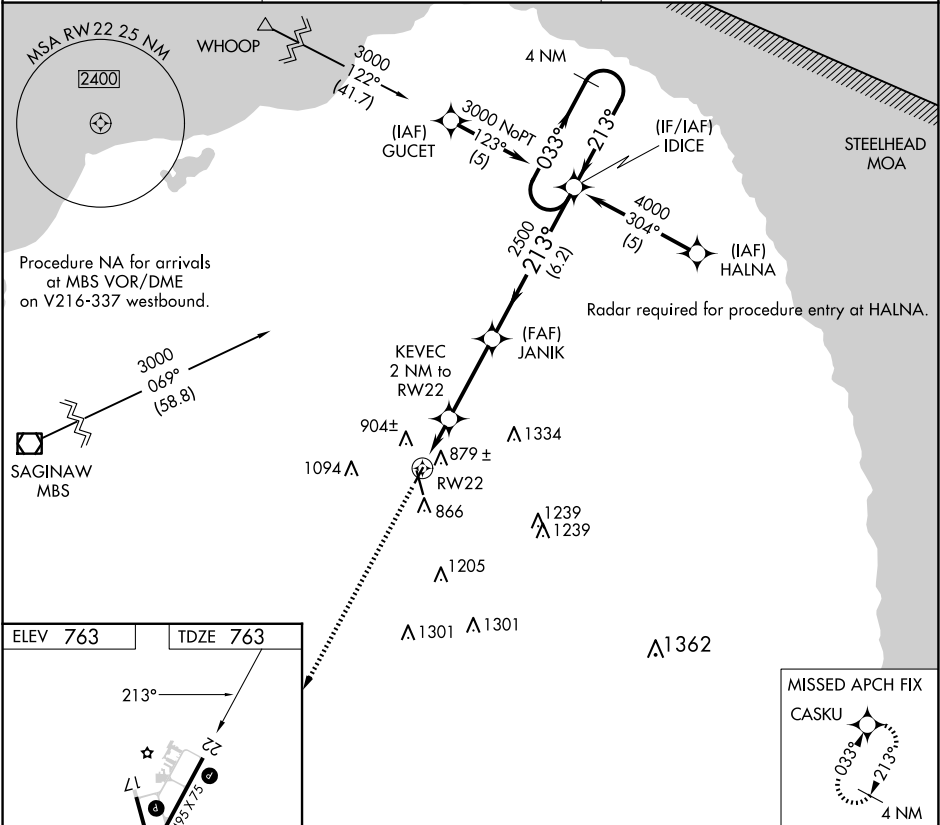
RNP APCH.

▼

When local altimeter setting not received, use MBS Intl altimeter setting and increase all MDA 140 feet; increase LNAV Cat C visibility ½ SM. Procedure NA at night. Rwy 22 helicopter visibility reduction below 1 SM NA.

MISSED APPROACH: Climb to 3000 direct CASKU and hold.

AWOS-3 118.6	CLEVELAND CENTER 127.7 290.425	UNICOM 123.075 (CTAF) 0
------------------------	--	-----------------------------------



ELEV 763 TDZE 763

213°

3000

2500

1440

35

MISSED APCH FIX
CASKU

3000

CASKU

Visual Segment - Obstacles.

JANIK

KEVEC 2 NM to RW22

RW22

2 NM

3.3 NM

6.2 NM

4 NM Holding Pattern

033°

213°

3000

CATEGORY	A	B	C	D
LNAV MDA	1140-1	377 (400-1)		NA