

|  |                        |   |
|--|------------------------|---|
| WAAS<br>CH <b>69205</b><br><b>W17A</b> | APP CRS<br><b>170°</b> | Rwy Idg<br>TDZE <b>763</b><br>Apt Elev <b>763</b> |
|--|------------------------|---|

RNAV (GPS) RWY 17

HURON COUNTY MEML (BAX)

RNP APCH.

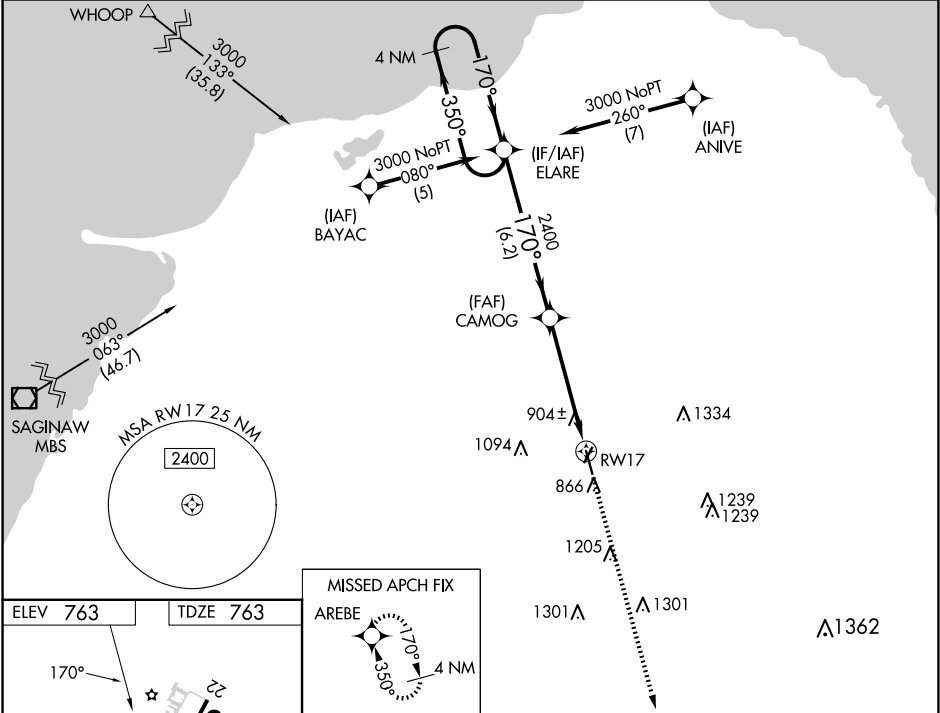
▼

▲

Baro-VNAV NA when using MBS Intl altimeter setting. For uncompensated Baro-VNAV systems, LNAV/VNAV NA below -16°C or above 54°C. When local altimeter setting not received, use MBS Intl altimeter setting and increase all DA 129 feet and all MDA 140 feet, increase LPV all Cats visibility ¾ mile; increase LNAV Cat C ½ mile. Rwy 17 helicopter visibility reduction below ¾ SM NA.

MISSED APPROACH:  
Climb to 3000 direct AREBE and hold.

|                        |  |                                   |
|------------------------|--|-----------------------------------|
| AWOS-3<br><b>118.6</b> | CLEVELAND CENTER<br><b>127.7 290.425</b> | UNICOM<br><b>123.075 (CTAF) 0</b> |
|------------------------|--|-----------------------------------|



4 NM Holding Pattern ELARE

3000 350° 170° GP 3.00° TCH 40

CAMOG 2400

RW17 2400

6.2 NM 4.9 NM

| CATEGORY     | A                  | B           | C                    | D  |
|--------------|--------------------|-------------|----------------------|----|
| LPV DA       | 1075-1 312 (400-1) |             |                      | NA |
| LNAV/VNAV DA | 1352-2 589 (600-2) |             |                      | NA |
| LNAV MDA     | 1220-1             | 457 (500-1) | 1220-1¼ 457 (500-1¼) | NA |

REIL Rws 17 and 35 1  
MIRL Rws 4-22 and 17-35 1