

WAAS CH <b>97708</b> <b>W09A</b>	APP CRS <b>090°</b>	Rwy Idg <b>4549</b> TDZE <b>669</b> Apt Elev <b>669</b>
--	------------------------	---

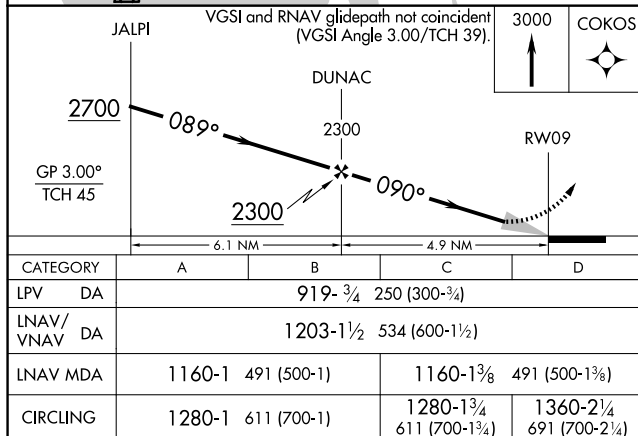
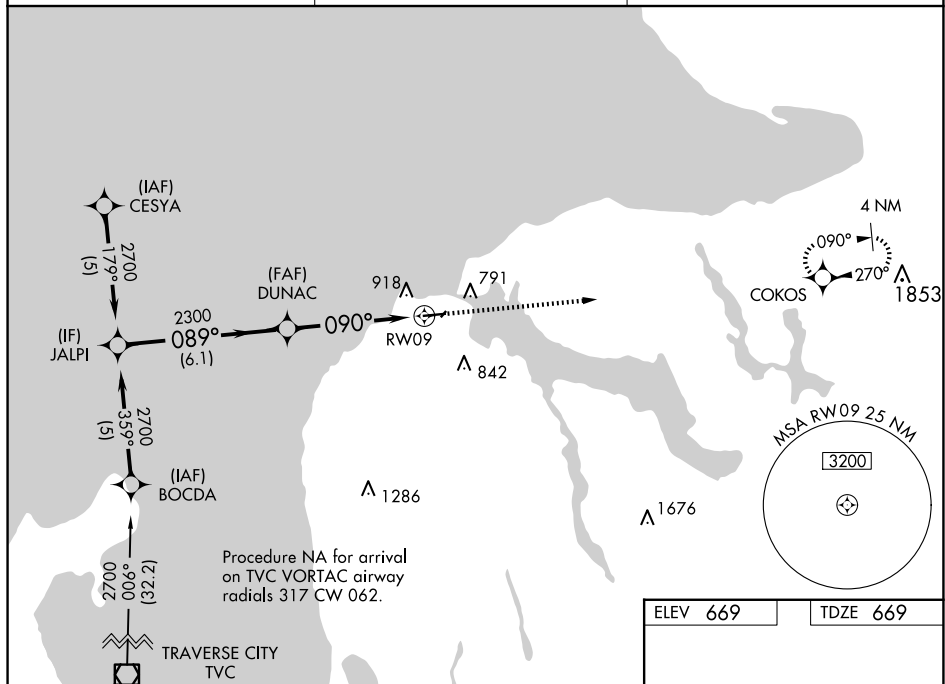
RNAV (GPS) RWY 9  
CHARLEVOIX MUNI (CVX)

RNP APCH - GPS.

**T** Circling NA to Rwy 4 and 22. Baro-VNAV NA when using Pellston altimeter setting.  
**A** For uncompensated Baro-VNAV systems, LNAV/VNAV NA below -16°C or above 54°C.  
 When local altimeter setting not received, use Pellston altimeter setting: increase LPV DA to 986 feet and all visibilities ½ SM; increase LNAV/VNAV DA to 1270 feet and all visibilities ¼ SM; increase all MDA 80 feet and visibility Cats C and D ¼ SM.

**MISSED APPROACH:**  
Climb to 3000 direct  
COKOS and hold.

AWOS-3P <b>120.0</b>	MINNEAPOLIS CENTER <b>134.6 354.05</b>	UNICOM <b>122.8</b> (CTAF) <b>0</b>
-------------------------	---	--



CATEGORY	A	B	C	D
LPV DA	919- $\frac{3}{4}$ 250 (300- $\frac{3}{4}$ )			
LNAV/ VNAV DA	1203-1 $\frac{1}{2}$ 534 (600-1 $\frac{1}{2}$ )			
LNAV MDA	1160-1	491 (500-1)	1160-1 $\frac{3}{8}$	491 (500-1 $\frac{3}{8}$ )
CIRCLING	1280-1	611 (700-1)	1280-1 $\frac{3}{4}$ 611 (700-1 $\frac{3}{4}$ )	1360-2 $\frac{1}{4}$ 691 (700-2 $\frac{1}{4}$ )

