

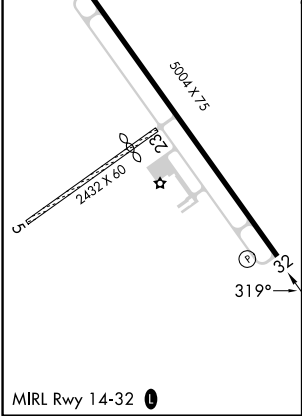
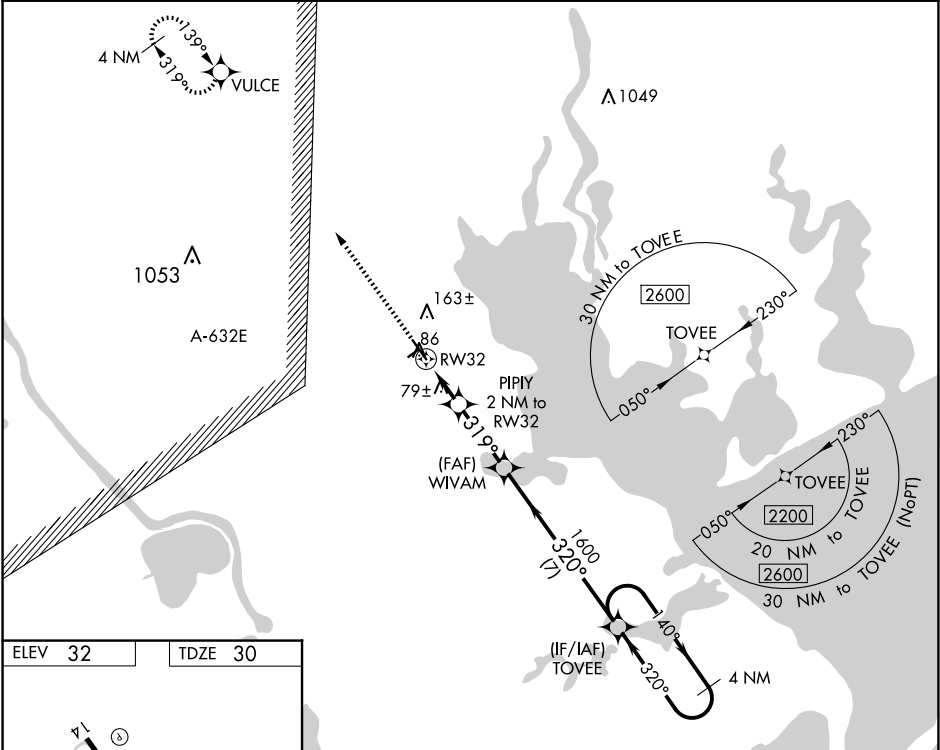
WAAS CH 58037 W32A	APP CRS 319°	Rwy ldg TDZE 30 Apt Elev 32	5004
--	------------------------	---	-------------

RNAV (GPS) RWY 32

CALHOUN COUNTY (PKV)

RNP APCH - GPS.	When local altimeter setting not received, use Victoria altimeter setting and increase all MDAs 60 feet and LNAV visibility Cat C ¼ SM and LP visibility Cat C ½ SM. Rwy 32 helicopter visibility reduction below 1 SM NA. Straight-In Rwy 32 NA at night, Circling Rwy 32 NA at night.	MISSED APPROACH: Climb to 2200 direct VULCE and hold.
-----------------	---	---

AWOS-3 118.275	HOUSTON CENTER 135.05 353.6	UNICOM 122.8 (CTAF) 0
--------------------------	---------------------------------------	---------------------------------



2200	VULCE	TOVEE	4 NM Holding Pattern
PIPIY 2 NM to RW32	WIVAM	TOVEE	140°
319°	320°	320°	2200
700	1600	2200	
2 NM	2.8 NM	7 NM	
CATEGORY	A	B	C
LP MDA	340-1	310 (400-1)	340-¾ 310 (400-¾)
LNAV MDA	400-1	370 (400-1)	NA
CIRCLING	520-1	488 (500-1)	560-1½ 528 (600-1½)