

WAAS CH 53437 W14A	APP CRS 139°	Rwy Idg TDZE 30 Apt Elev 32	5004
--	------------------------	---	-------------

RNAV (GPS) RWY 14

CALHOUN COUNTY (PKV)

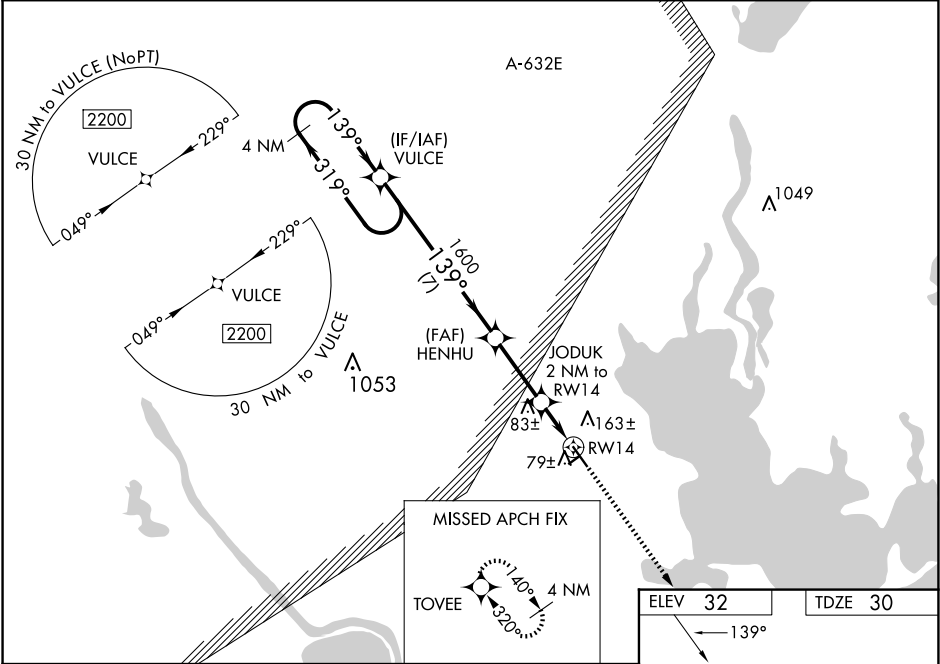
RNP APCH - GPS.

⚠

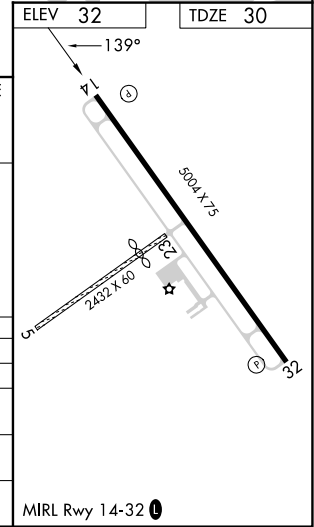
Baro-VNAV and VDP NA when using Victoria altimeter setting. For uncompensated Baro-VNAV systems, LNAV/VNAV NA below -15°C or above 54°C. When local altimeter setting not received, use Victoria altimeter setting and increase LPV DA and LNAV/VNAV DA to 331 feet and all visibilities 1/8 SM; increase all MDAs 60 feet and LNAV visibility Cat C 1/4 SM. Circling Rwy 32 NA at night. Circling NA to Rwys 5 and 23.

MISSED APPROACH:
Climb to 2200 direct TOVEE and hold.

AWOS-3 118.275	HOUSTON CENTER 135.05 353.6	UNICOM 122.8 (CTAF) 0
--------------------------	---------------------------------------	---------------------------------



4 NM Holding Pattern		VULCE	HENHU	JODUK	2 NM to RWY 14	1.1 NM to RWY 14
2200		139°	1600	700		
GP 3.00°		TCH 45°				
7 NM		2.8 NM	0.9 NM	1.1		
CATEGORY	A	B	C	D		
LPV DA	280-3/4	250 (300-3/4)		NA		
LNAV/VNAV DA	280-3/4	250 (300-3/4)		NA		
LNAV MDA	440-1	410 (500-1)	440-1 1/8	410 (500-1 1/8)	NA	
CIRCLING	520-1	488 (500-1)	560-1 1/2	528 (600-1 1/2)	NA	



SC-5, 07 AUG 2025 to 04 SEP 2025

SC-5, 07 AUG 2025 to 04 SEP 2025