

WAAS CH 86447 W15A	APP CRS 149°	Rwy Ldg TDZE Apt Elev	3848 805 811
--	------------------------	-----------------------------	---

RNAV (GPS) RWY 15

INDIANAPOLIS METRO (UMP)

RNP APCH - GPS.

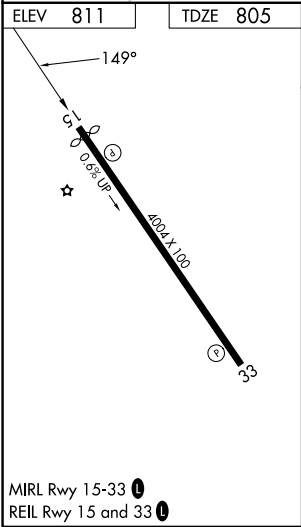
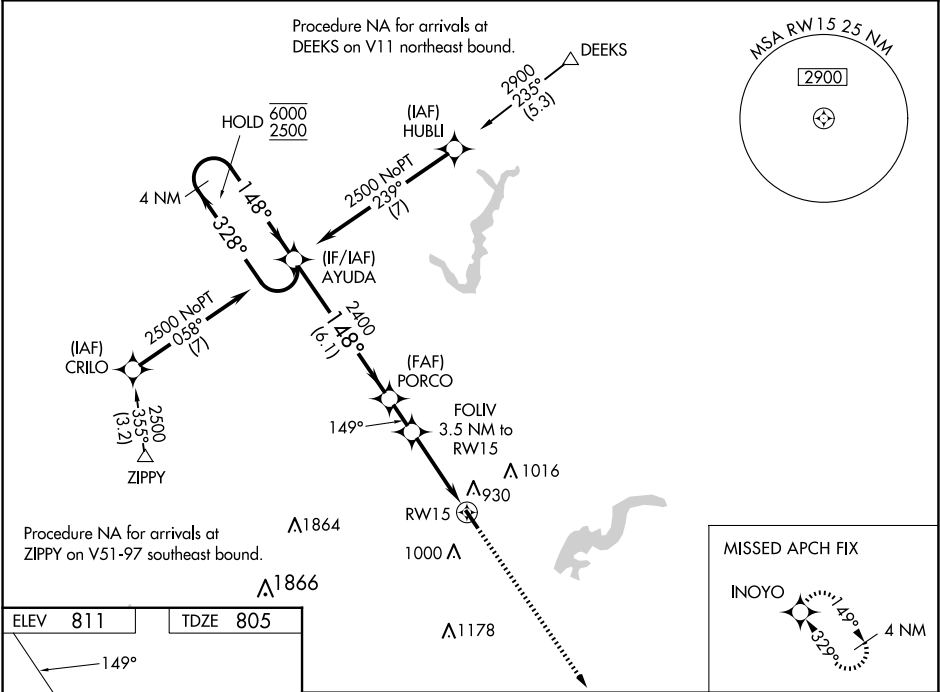
▼

Baro-VNAV and VDP NA when using IND altimeter setting. Rwy 15 helicopter visibility reduction below ¾ SM NA. For uncompensated Baro-VNAV systems, LNAV/VNAV NA below -16°C or above 54°C. When local altimeter setting not received, use IND altimeter setting and increase LPV DA to 1098 feet. Increase LNAV/VNAV DA to 1173 feet; increase all MDAs 60 feet and LNAV visibility Cat C ½ SM.

MISSED APPROACH:

Climb to 2900 direct INOYO and hold.

AWOS-3PT 119.375	INDIANAPOLIS APP CON 127.15 317.8	CLNC DEL 121.625	UNICOM 123.0 (CTAF) 0
----------------------------	---	----------------------------	--



4 NM Holding Pattern				2900	INOYO
AYUDA				↑	
6000 ← 328°				✧	
2500 → 148°					
GP 3.00° TCH 43					
AYUDA					
PORCO					
FOIIV					
3.5 NM to RW15					
1.3 NM to RW15					
RW15					
6.1 NM					
1.4 NM					
2.2 NM					
1.3 NM					
CATEGORY	A	B	C	D	
LPV DA	1055-1		250 (300-1)		NA
LNAV/VNAV DA	1130-1		325 (400-1)		NA
LNAV MDA	1240-1		1240-1¼ 435 (500-1¼)		NA
CIRCLING	1320-1 509 (600-1)		1340-1 529 (600-1)		NA