

WAAS

CH **70637**

W01A

APP CRS

008°

Rwy Idg

4501

TDZE

67

Apt Elev

67

RNAV (GPS) RWY 1

TRI-COUNTY AT HENRY JOYNER FLD (ASJ)

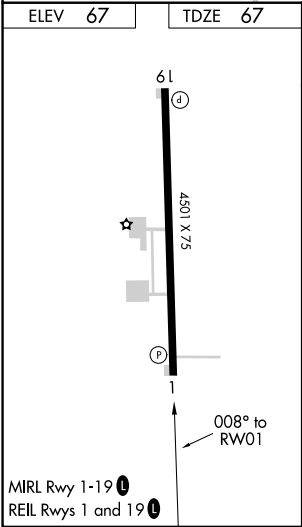
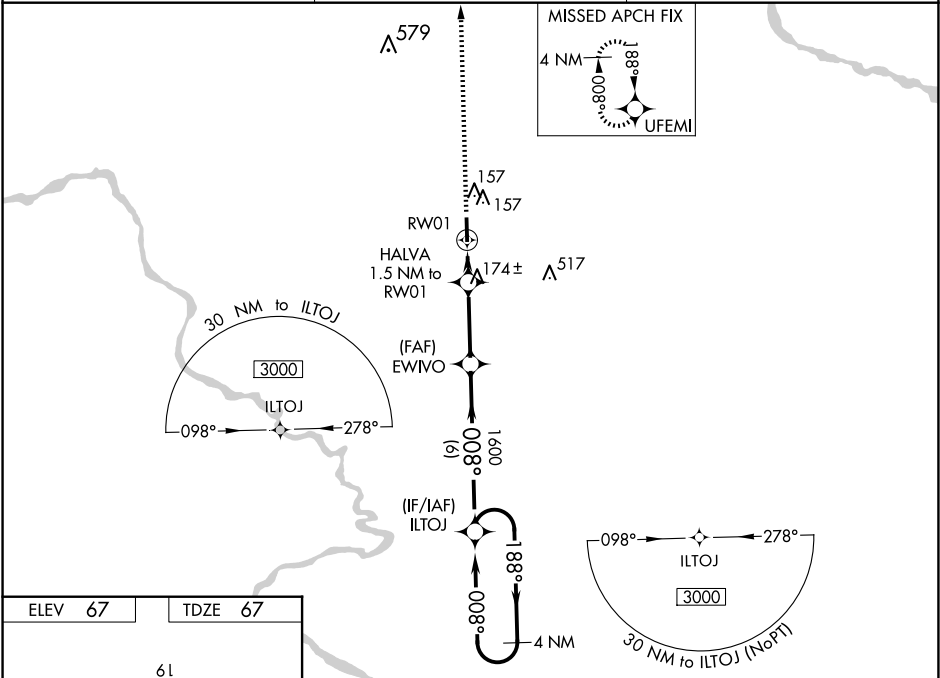
⚠

⚠

DME/DME RNP-0.3 NA. Night Landing: Rwy 1 NA. When local altimeter setting not received, use Franklin altimeter setting and increase all DA 67 feet and all MDA 80 feet; increase LPV all Cats visibility ⅛ mile, LNAV Cats C/D visibility ⅜ mile and Circling Cat D visibility ¼ mile. Baro-VNAV NA when using Franklin altimeter setting. For uncompensated Baro-VNAV systems, LNAV/VNAV NA below -15°C (5°F) or above 54°C (130°F). Helicopter visibility reduction below 1 SM NA.

MISSED APPROACH:
Climb to 3000 direct UFEMI and hold, continue climb-in-hold to 3000.

AWOS-3 119.075	WASHINGTON CENTER 123.85 279.65	UNICOM 122.8 (CTAF) 📻
--------------------------	---	--



<div>3000 ↑</div>		<div>UFEMI ✦</div>		<div>ILTOJ</div>		<div>4 NM Holding Pattern</div>	
*LNAV only.		<div>HALVA 1.5 NM to RW01</div>		<div>EWVO 1600</div>		<div>188° → 3000 ← 008°</div>	
<div>RW01</div>		<div>600*</div>		<div>008°</div>		<div>GP 3.17° TCH 41</div>	
<div>→ 1.5 NM</div>		<div>2.9 NM</div>		<div>6 NM</div>			
CATEGORY		A		B		C	
LPV DA		359-1		292 (300-1)		NA	
LNAV/ VNAV DA		322-1		255 (300-1)		NA	
LNAV MDA		440-1		373 (400-1)			
<div>C</div> CIRCLING		580-1 513 (600-1)		580-1½ 513 (600-1½)		820-2½ 753 (800-2½)	