

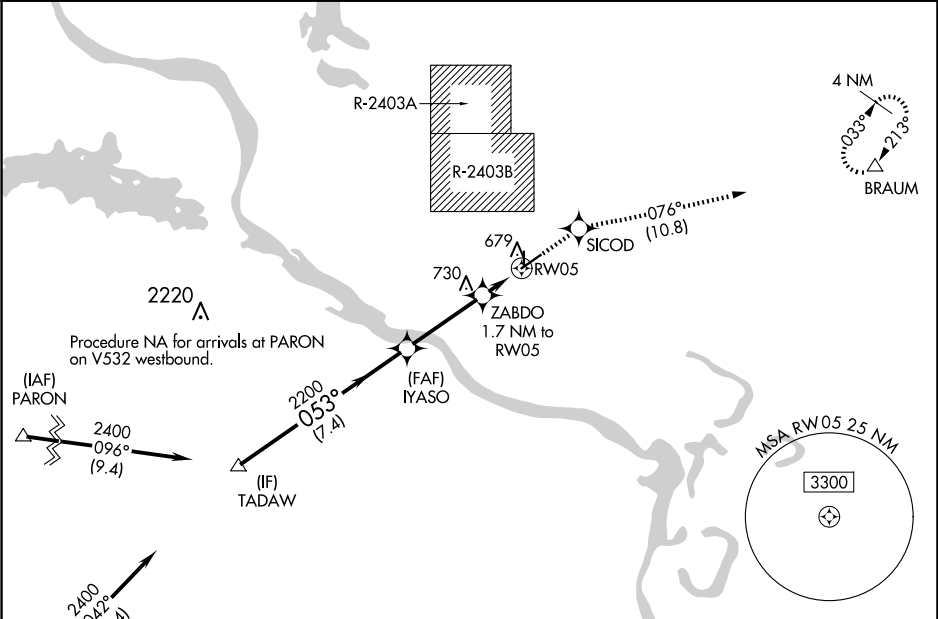
WAAS CH <b>58106</b> <b>W05A</b>	APP CRS <b>053°</b>	Rwy Idg TDZE <b>541</b> Apt Elev <b>545</b>
--	------------------------	---

RNAV (GPS) RWY 5

NORTH LITTLE ROCK MUNI (ORK)

RNP APCH.	MISSED APPROACH: Climb to 2000 direct SICOD and on track 076° to BRAUM and hold.
Circling NA for Cats B and C north of Rwy 5-23 when restricted area R-2403B in use. For uncompensated Baro-VNAV systems, LNAV/VNAV NA below -16°C or above 54°C.	

AWOS-3PT <b>123.775</b>	LITTLE ROCK APP CON <b>119.5 306.2</b>	CLNC DEL <b>121.6</b>	UNICOM <b>123.075 (CTAF) 0</b>
----------------------------	---	--------------------------	-----------------------------------



Procedure NA for arrivals at PARON on V532 westbound.		Procedure NA for arrivals at BEGAN on V124-573 westbound.	
(IAF) PARON		(IF) TADAW	
2400 096° (9.4)		2400 042° (10.4)	
2220		2200	
053° (7.4)		053°	
2200		2200	
7.4 NM		3.3 NM	
1.7 NM		1.7 NM	
GP 3.00° TCH 40		*1120	
TADAW		ZABDO 1.7 NM to RW05	
2000		SICOD	
tr 076°		BRAUM	
*LNAV only.		RW05	
CATEGORY		A	
LPV DA		854-7/8 313 (400-7/8)	
LNAV/VNAV DA		986-13/8 445 (500-13/8)	
LNAV MDA		1000-1 459 (500-1)	
CIRCLING		1060-1 515 (600-1)	