

LOC/DME I-ORK
111.9
Chan **56**

APP CRS
053°

Rwy Idg
TDZE **541**
Apt Elev **545**

LOC RWY 5
NORTH LITTLE ROCK MUNI (ORK)

From PARON: RNAV 1-GPS required.
DME and RADAR required.

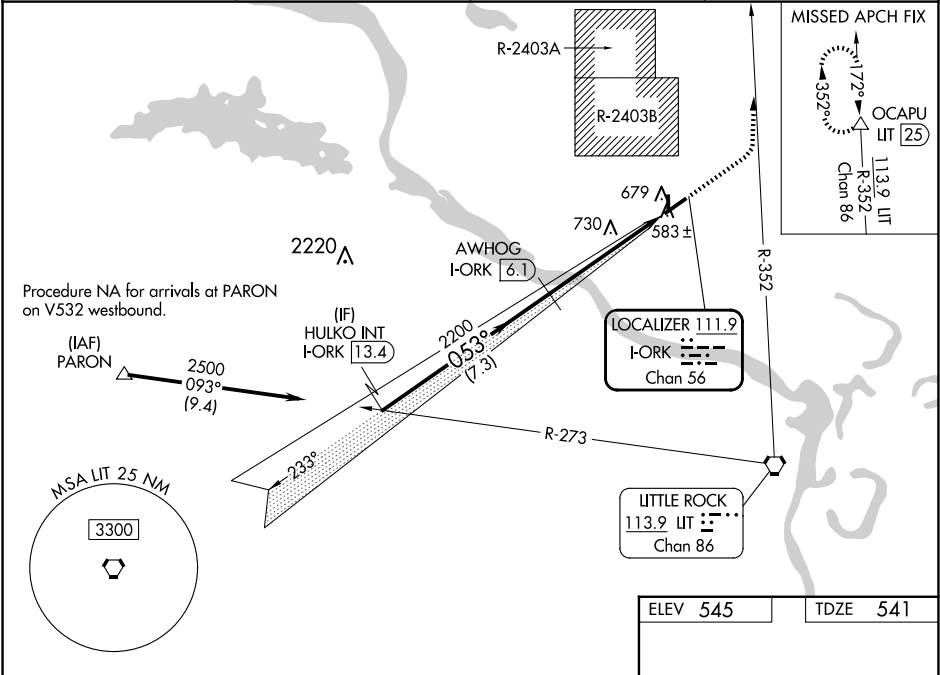
T

A

Circling NA for Cats B and C north of Rwy 5-23 when R-2403B active.

MISSED APPROACH: Climb to 1700 then climbing left turn to 4000 on heading 360° and LIT VORTAC R-352 to OCAPU/LIT 25 DME and hold.

AWOS-3PT 123.775	LITTLE ROCK APP CON 119.5 306.2	CLNC DEL 121.6	UNICOM 123.075 (CTAF) 0
----------------------------	---	--------------------------	-----------------------------------



VGSI and descent angles not coincident (VGSI angle 3.00/TCH 49).		1700	4000	LIT	OCAPU
		↑	hdg 360°	R-352	△
HULKO INT I-ORK 13.4		Use I-ORK DME when on the localizer course.			
2500		AWHOG I-ORK 6.1	I-ORK 2.2	I-ORK 1	
053°		3.00° TCH 40			
2200					
7.3 NM		3.9 NM	1.2		
CATEGORY	A	B	C	D	
S-5	980-1	439 (500-1)	980-1¼ 439 (500-1¼)	NA	
CIRCLING	1040-1	495 (500-1)	1080-1½ 535 (600-1½)	NA	

REIL Rwy 5, 17, and 23 0

MRL Rwy 5-23 and 17-35 0

SC-1, 07 AUG 2025 to 04 SEP 2025

SC-1, 07 AUG 2025 to 04 SEP 2025