

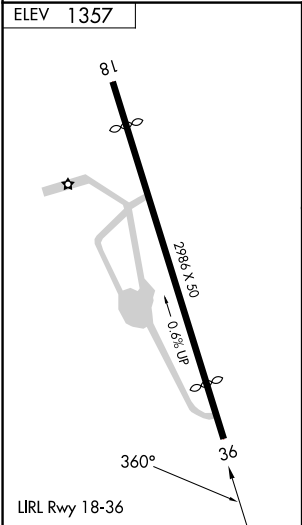
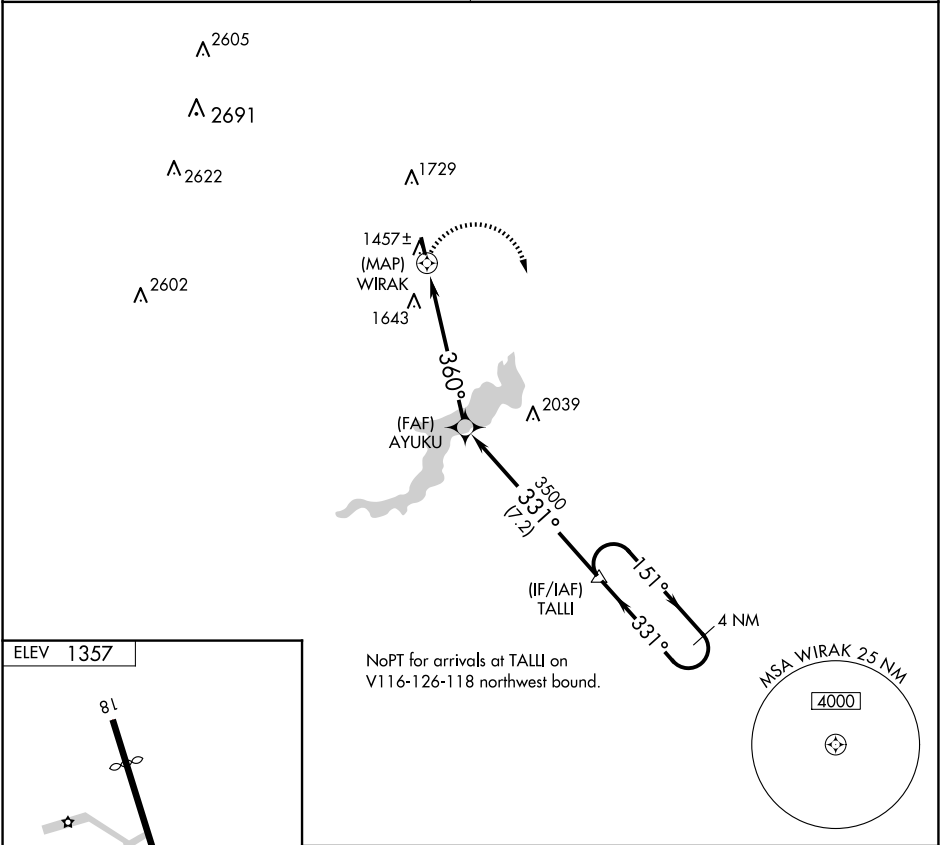
APP CRS	Rwy Idg	N/A
360°	TDZE	N/A
	Apt Elev	1357

RNAV (GPS)-B

CHERRY RIDGE (N30)

<div><div>▼</div><div>NA</div></div> <div>DME/DME RNP-0.3 NA. Procedure NA at night. Obtain local altimeter setting on CTAF; when not received, use Wilkes-Barre/Scranton Intl altimeter setting, and increase MDA 320 feet and Cat A visibility ¼ mile.</div>	MISSED APPROACH: Climbing right turn to 4000 direct TALLI and hold.
--	---

WILKES-BARRE APP CON 120.95 256.7	UNICOM 122.8 (CTAF)
--------------------------------------	------------------------



4000	TALLI	4000	TALLI	4 NM	Holding Pattern
CATEGORY	A	B	C	D	
CIRCLING	2080-1 723 (800-1)	NA			