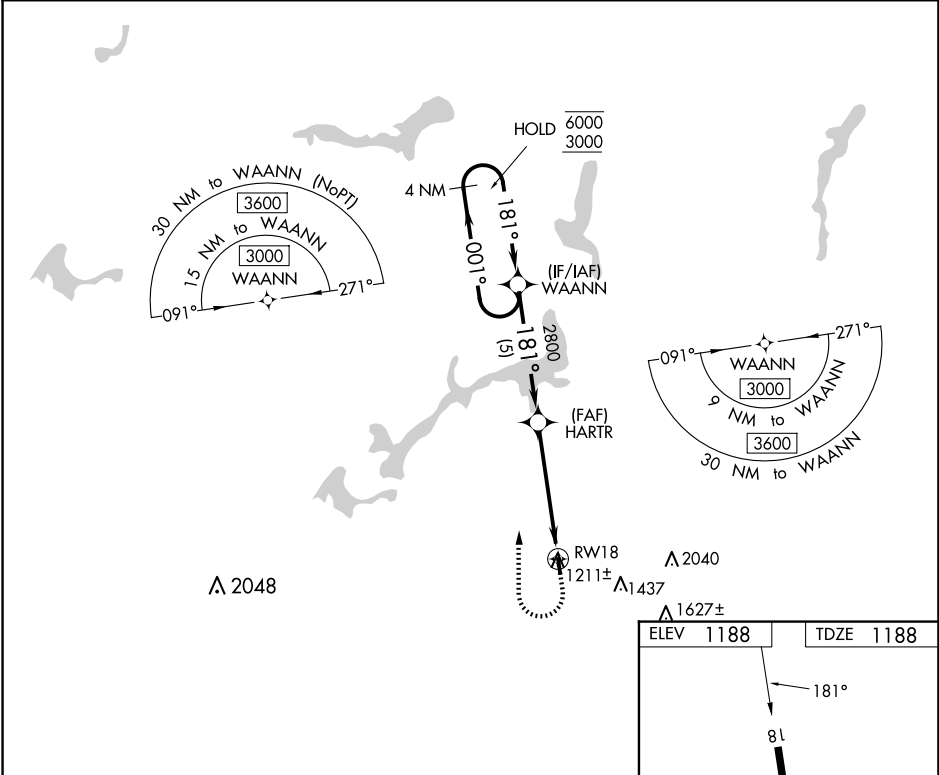


APP CRS <b>181°</b>	Rwy Idg	<b>2768</b>
	TDZE	<b>1188</b>
	Apt Elev	<b>1188</b>

RNAV (GPS) RWY 18  
TRI-CITY (3G6)

RNP APCH.		MISSED APPROACH: Climb to 1700 then climbing right turn to 3000 direct WAANN and hold.
	Procedure NA at night. Rwy 18 helicopter visibility reduction below 1 SM NA. Use Akron-Canton Rgnl altimeter setting, when not received, use Ravenna altimeter setting.	
	NA	
CAK ASOS <b>121.05</b>	CLEVELAND APP CON ★ <b>125.5 371.875</b>	CTAF <b>122.9 0</b>



4 NM Holding Pattern		WAANN	1700	3000	WAANN
6000 ← 001°		181° →	HARTR		
3000		181°	2800		
		181°	3.00° TCH 40		
		181°	RWY 18		
		181°	5 NM		
		181°	5 NM		
CATEGORY	A	B	C	D	
LNAV MDA	1720-1	532 (600-1)	NA		
CIRCLING	1720-1 532 (600-1)	1740-1 552 (600-1)	NA		

