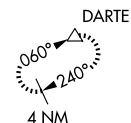


WAAS CH <b>45916</b> <b>W31A</b>	APP CRS <b>306°</b>	Rwy Idg <b>6025</b> TDZE <b>612</b> Apt Elev <b>620</b>
--	------------------------	---

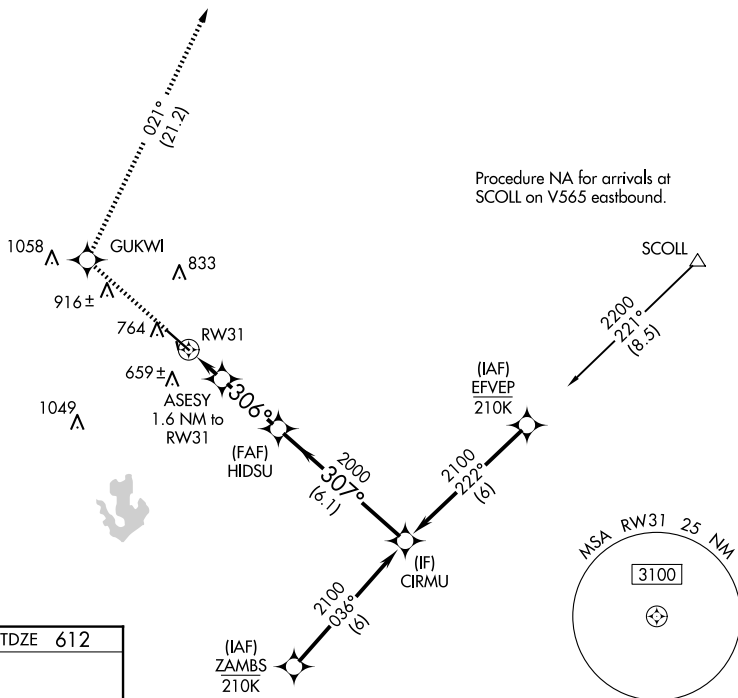
RNAV (GPS) RWY 31  
AUSTIN EXEC (EDC)

RNP APCH - GPS.				MISSED APPROACH: Climb to 3500 direct GUKWI and on track 021° to DARTE and hold.	
<div style="display: flex; align-items: center;"> <span>Circling NA to Rwy's 16 and 34. For uncompensated Baro-VNAV systems, LNAV/VNAV NA below -16°C or above 54°C.</span> </div>					
AWOS-3 <b>118.825</b>	AUSTIN APP CON <b>127.225 317.65</b>	EXECUTIVE TOWER★ <b>120.3 (CTAF) 0</b>	GND CON <b>119.45</b>	CLNC DEL <b>126.025</b> (When twr closed)	UNICOM <b>122.975</b>

MISSED APCH FIX

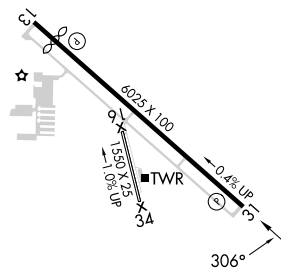


Procedure NA for arrivals at SCOLL on V565 eastbound.

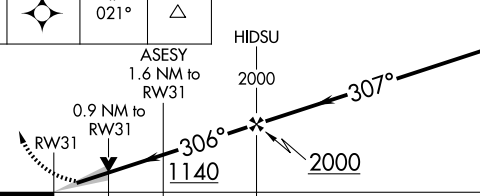


ELEV 620

TDZE 612



MIRL Rwy 13-31 **L**  
REIL Rwy 13 and 31 **L**

3500 ↑	GUKW1 ✦	tr 021° △					
CATEGORY	A		B		C		D
LPV DA			812- <sup>3</sup> / <sub>4</sub>		200 (200- <sup>3</sup> / <sub>4</sub> )		
LNAV/ VNAV	DA		909- <sup>7</sup> / <sub>8</sub>		297 (300- <sup>7</sup> / <sub>8</sub> )		
LNAV MDA	920-1		308 (300-1)		920- <sup>7</sup> / <sub>8</sub>		308 (300- <sup>7</sup> / <sub>8</sub> )
CIRCLING	1140-1 520 (600-1)	1160-1 540 (600-1)	1280-1 <sup>3</sup> / <sub>4</sub> 660 (700-1 <sup>3</sup> / <sub>4</sub> )		1280-2 660 (700-2)		

## RNAV (GPS) RWY 31