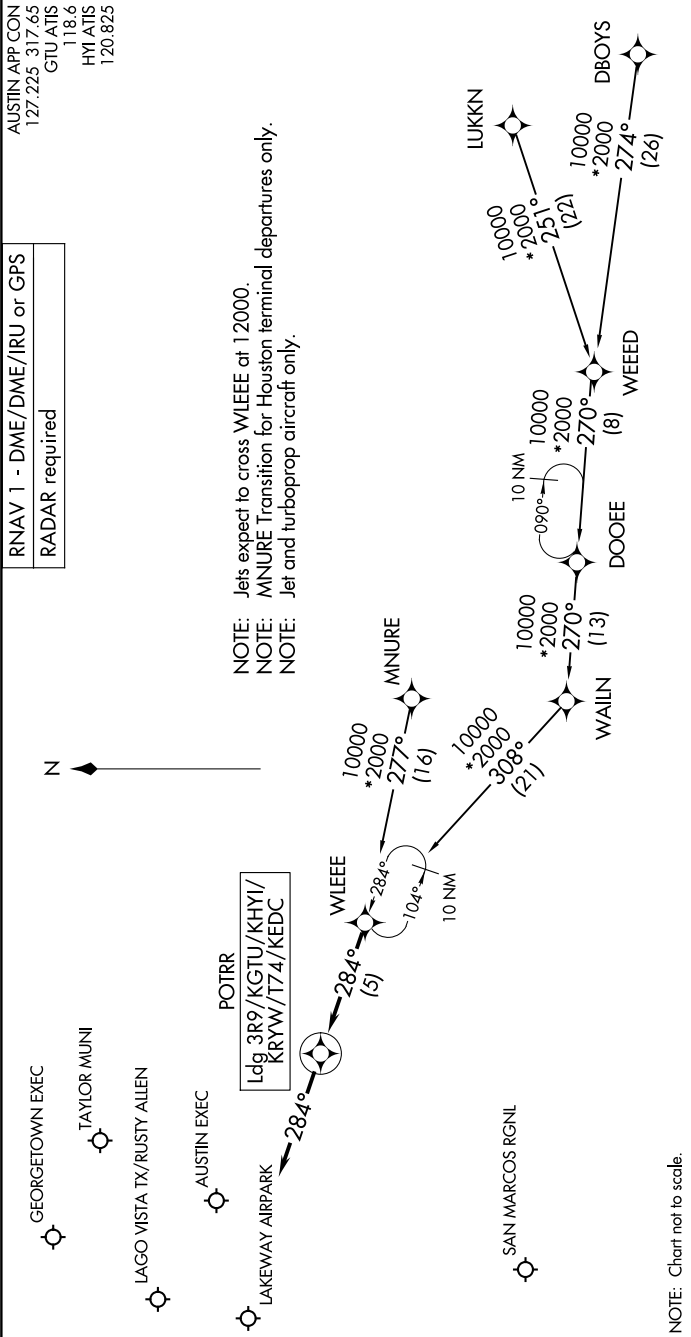


SC-3, 07 AUG 2025 to 04 SEP 2025

AUSTIN APP CON
127.225 317.45
GTU ATIS
118.6
HYI ATIS
120.825

RNAV 1 - DME/DME/IRU or GPS
RADAR required



ARRIVAL ROUTE DESCRIPTION

- DBOYS TRANSITION (DBOYS.POTRR2)
- LUKKN TRANSITION (LUKKN.POTRR2)
- MNURE TRANSITION (MNURE.POTRR2)
- WEEED TRANSITION (WEEED.POTRR2)

LANDING ALL AIRPORTS: From WLEEE on track 284° to POTRR, then on track 284°. Expect RADAR vectors to final approach course.

SC-3, 07 AUG 2025 to 04 SEP 2025