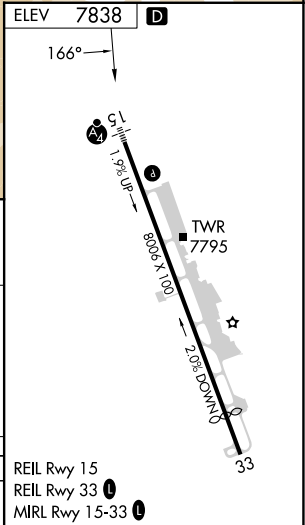
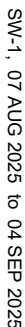


RNAV (GPS)-F

ASPEN-PITKIN COUNTY/SARDY FLD (ASE)

MISSED APPROACH: Climbing right turn to 14000 direct LINDZ and on track 247° to GLENO and hold.

NICOM
22.95



SW-1, 07 AUG 2025 to 04 SEP 2025

The diagram shows a flight path starting at a holding pattern (8 NM) and proceeding through several waypoints: DBL VOR/DME, HEPEB, ALLIX, and MAFMU. The path includes a turn of 346° and 166° at the holding pattern, a turn of 166° at DBL, and a turn of 6.49° at ALLIX. The path also includes a turn of 166° at HEPEB and a turn of 166° at ALLIX. The path ends at MAFMU. The path is labeled with altitudes: 13700, 12900, and 12200. The path is also labeled with navigation aids: 8 NM Holding Pattern, DBL VOR/DME, HEPEB, ALLIX, and MAFMU. The path is also labeled with navigation aids: 346°, 166°, 166°, 6.49°, and 166°.

CATEGORY	A	B	C	D
CIRCLING	10200-1 $\frac{3}{4}$ 2362 (2400-1 $\frac{3}{4}$)	10220-1 $\frac{3}{4}$ 2382 (2400-1 $\frac{3}{4}$)	10960-3 3122 (3200-3)	NA

ASPEN-PITKIN COUNTY/SARDY FLD (ASE)
RNAV (GPS)-F

39°13'N-106°52'W