

APP CRS
020°

Rwy Ldg
TDZE
Apt Elev
11

N/A
N/A
11

RNAV (GPS)-B
MURRAY FLD (EKA)

RNP APCH-GPS.

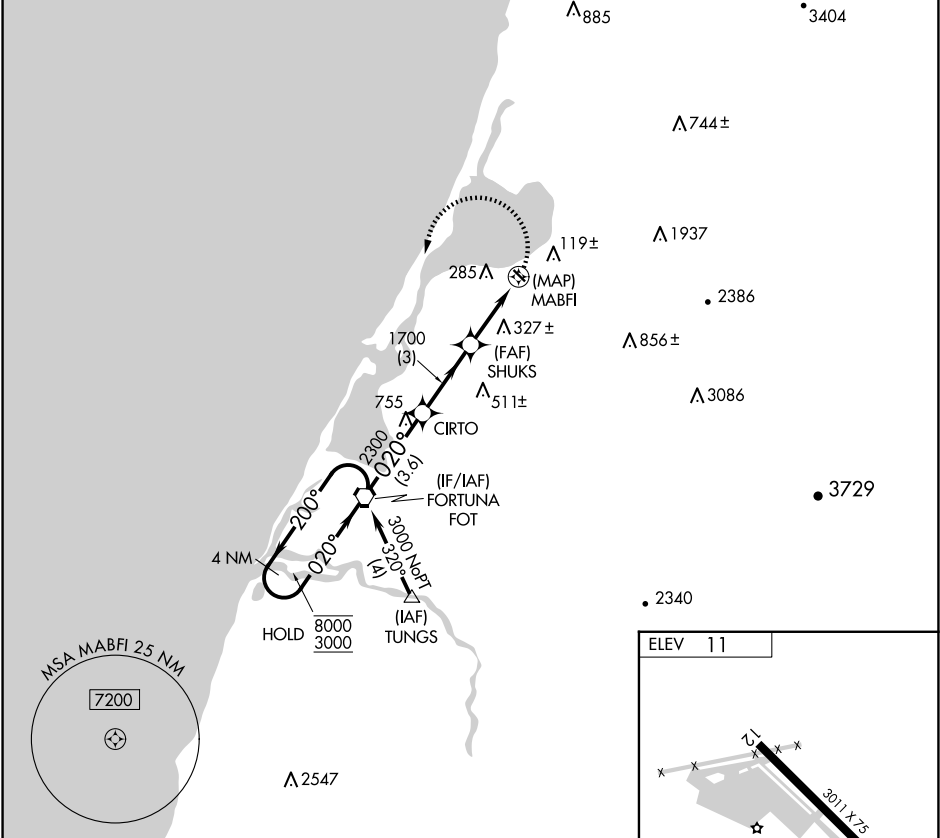
▼

▲ NA

Procedure NA at night. Use Arcata altimeter setting when not received, use Crescent City altimeter setting and increase all MDA 100 feet. Circling Cat C NA when using Crescent City altimeter. Rwy 12, 30 helicopter visibility reduction below 1 SM NA.

MISSED APPROACH: Climbing left turn to 3000 direct FOT VORTAC and hold.

| | | |
|----------------------------|---------------------------------------|---------------------------------|
| ACV ASOS 118.525 | SEATTLE CENTER 124.85 306.3 | UNICOM 122.7 (CTAF) 0 |
|----------------------------|---------------------------------------|---------------------------------|



4 NM Holding Pattern

FOT VORTAC

3000 FOT

8000 ← 200°

3000 → 020°

020°

CIRTO

SHUKS

MABFI

2300

1700

3.6 NM

3 NM

3 NM

| CATEGORY | A | B | C | D |
|----------|-------------------------|---------------------------|-------------------------|----|
| CIRCLING | 980-1¼ 969 (1000-1¼) | 1220-1½ 1209 (1300-1½) | 1640-3 1629 (1700-3) | NA |

MRL Rwy 12-30 0