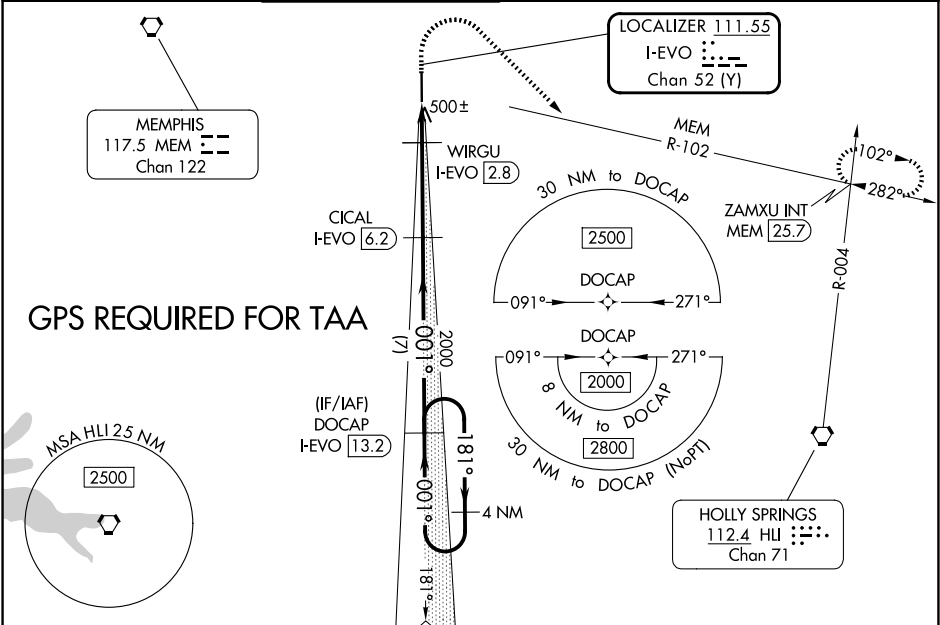


LOC/DME I-EVO 111.55 Chan 52 (Y)	APP CRS 001°	Rwy Ldg TDZE 401 Apt Elev 402	LOC RWY 36 OLIVE BRANCH/TAYLOR FLD (OLV)
--	------------------------	---	---

⚠ When local altimeter setting not received, use Memphis Intl altimeter setting and increase all MDA 40 feet; increase S-LOC 36 Cats C and D visibility 1/8 mile and Circling Cats C and D visibility 1/4 mile. Rwy 36 helicopter visibility reduction below 3/4 SM NA. DME required.

MISSED APPROACH: Climb to 1100 then climbing right turn to 2500 on heading 134° and MEM VORTAC R-102 to ZAMXU INT/MEM 25.7 DME and hold.

ATIS 119.925	MEMPHIS APP CON 125.8 338.3	OLIVE BRANCH TOWER ★ 125.275 (CTAF) 0	GND CON 121.2	CLNC DEL 121.2	CLNC DEL 121.3 (When twr closed)	UNICOM 122.95
------------------------	---------------------------------------	--	-------------------------	--------------------------	---	-------------------------



ELEV 402	TDZE 401
81	6000 X 100
TWR ★	36
HIRL Rwy 18-36	REIL Rwy 36
001°	
1100	2500
MEM R-102	ZAMXU INT
CICAL I-EVO 6.2	DOCAP I-EVO 13.2
WIRGU I-EVO 2.8	3.00° TCH 45
I-EVO 1.3	860*
1.5 NM	3.4 NM
7 NM	4 NM Holding Pattern
001°	181°
2000	2000
*900 when using Memphis Intl altimeter setting.	
CATEGORY	A B C D
S-36	760-1 359 (400-1)
CIRCLING	1060-1 658 (700-1) 1060-1 3/4 658 (700-1 3/4) 1200-2 1/2 798 (800-2 1/2)