

WAAS CH <b>86805</b> <b>W36A</b>	APP CRS <b>005°</b>	Rwy Idg <b>5004</b> TDZE <b>417</b> Apt Elev <b>418</b>
--	------------------------	---

RNAV (GPS) RWY 36  
PERRY-HOUSTON COUNTY (PXE)

RNP APCH-GPS.

**▼** Baro-VNAV and VDP NA when using Middle Georgia Rgnl altimeter setting. Rwy 36 helicopter visibility reduction below  $\frac{3}{4}$  SM NA. Inop table does not apply to LPV and LNAV/VNAV all Cats. For uncompensated Baro-VNAV systems, LNAV/VNAV NA below  $-15^{\circ}\text{C}$  or above  $54^{\circ}\text{C}$ . When local altimeter setting not received, use Middle Georgia Rgnl altimeter setting and increase LPV DA and LNAV/VNAV DA to 705 feet; increase all MDAs 40 feet; and Circling visibility Cat C/D  $\frac{1}{4}$  SM. For inop ALS, increase LNAV Cats A/B visibility to 1 SM and Cat C/D to  $\frac{1}{3}$  SM. For inop ALS, when using Middle Georgia Rgnl altimeter setting; increase LPV and LNAV/VNAV all Cats visibility to  $\frac{1}{2}$  SM and LNAV Cat A/B visibility to 1 SM.

MALSR

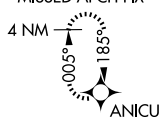
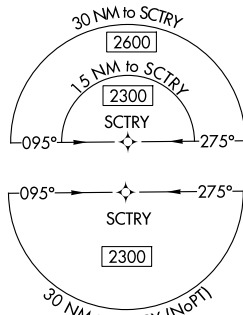
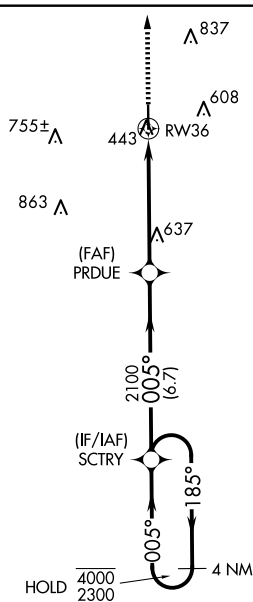


**MISSED APPROACH:**  
Climb to 2300 direct  
ANICU and hold.

AWOS-3  
123.825

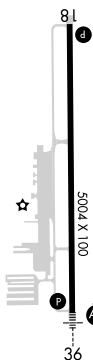
ATLANTA APP CON★  
124.2 279.6

UNICOM  
122.725 (CTAF) **L**

 $\Lambda_{980}$ 

ELEV 418

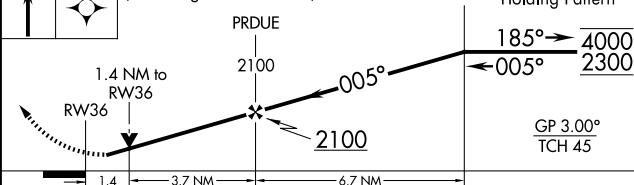
TDZE 417




HIRL Rwy 18-36 **L** ← 005°

PERRY, GEORGIA  
Amdt 2 08SEP22

2300	ANICU	VGSI and RNAV glidepath not coincident (VGSI Angle 3.00/TCH 30).
------	-------	--



CATEGORY	A	B	C	D
LPV DA	667-3/4 250 (300-3/4)			
LNAV/VNAV DA	667-3/4 250 (300-3/4)			
LNAV MDA	900-3/4 483 (500-3/4)		900-1 483 (500-1)	
 CIRCLING	900-1 482 (500-1)		1140-2 722 (800-2)	1280-2 3/4 862 (900-2 3/4)

PERRY, GEORGIA

32°31'N-83°46'W

PERRY-HOUSTON COUNTY (PXE)

RNAV (GPS) RWY 36