

WAAS CH 87104 W18A	APP CRS 185°	Rwy Idg 5004 TDZE 418 Apt Elev 418
--	------------------------	---

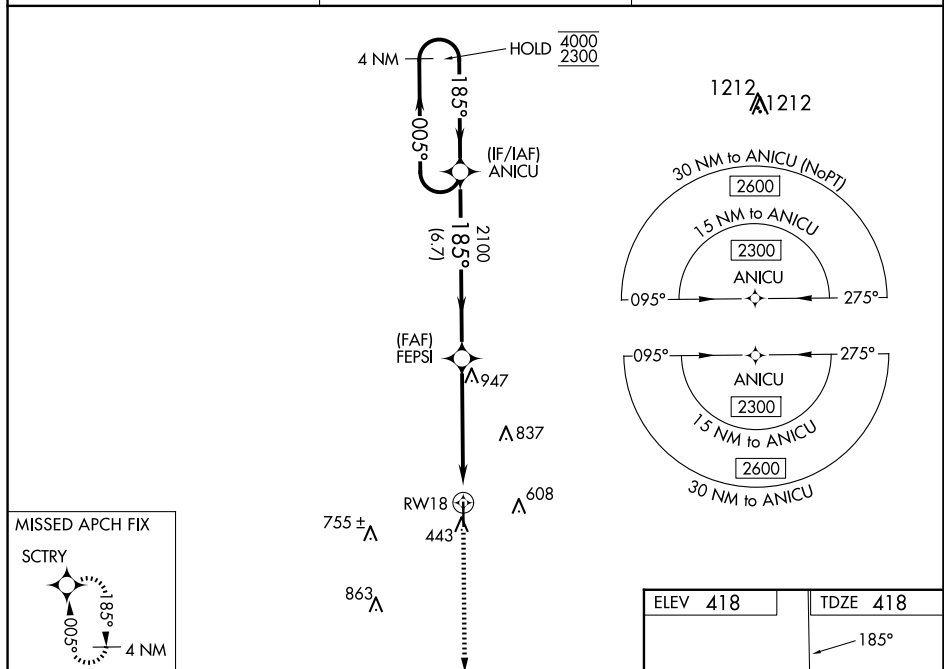
RNAV (GPS) RWY 18
PERRY-HOUSTON COUNTY (PXE)

RNP APCH-GPS.

- A** For uncompensated Baro-VNAV systems, LNAV/VNAV NA below -15°C or above 54°C. When local altimeter setting not received, use Middle Georgia Rgnl altimeter setting and increase LPV DA to 656 feet; increase LNAV/VNAV DA to 857 feet and all visibilities ½ SM. Increase all MDAs 40 feet; and Circling visibility Cat A and D ½ SM.

MISSED APPROACH: Climb to 2300 direct SCTRY and hold.

AWOS-3 123.825	ATLANTA APP CON ★ 124.2 279.6	UNICOM 122.725 (CTAF) 0
--------------------------	---	-----------------------------------



4 NM Holding Pattern ANICU VGSI and RNAV glidepath not coincident (VGSI Angle 3.00/TCH 30). 2300 SCTRY

4000 ← 005°
2300 185° →

GP 3.00°
TCH 40

2100

2100

2.4 NM to RW18

RW18

6.7 NM 2.8 NM 2.4 NM

CATEGORY	A	B	C	D
LPV DA	618- ³ / ₄ 200 (200- ³ / ₄)			
LNAV/ VNAV DA	819-1 ¹ / ₈ 401 (500-1 ¹ / ₈)			
LNAV MDA	1200-1 782 (800-1)	1200-1 ¹ / ₄ 782 (800-1 ¹ / ₄)	1200-2 ¹ / ₂	782 (800-2 ¹ / ₂)
C CIRCLING	1200-1 782 (800-1)	1200-1 ¹ / ₄ 782 (800-1 ¹ / ₄)	1200-2 ¹ / ₂ 782 (800-2 ¹ / ₂)	1280-2 ³ / ₄ 862 (900-2 ³ / ₄)

The diagram illustrates the layout of HIRL Runway 18-36. At the top, a box contains 'ELEV 418' and another box contains 'TDZE 418'. A vertical line represents the runway, with an arrow pointing to it from the text '185°'. The runway is marked with '81' at the top and '36' at the bottom. A star symbol is located to the left of the runway. A vertical line segment is labeled '500 X 100'. A small circle with the letter 'P' is located near the bottom of the runway. A small circle with the number '45' is located to the right of the runway. A small circle with the letter 'U' is located at the bottom of the diagram.