

LOC I-PXE 109.15	APP CRS 005°	Rwy Idg 5004
	TDZE 417	
	Apt Elev 418	

ILS or LOC RWY 36
PERRY-HOUSTON COUNTY (PXE)

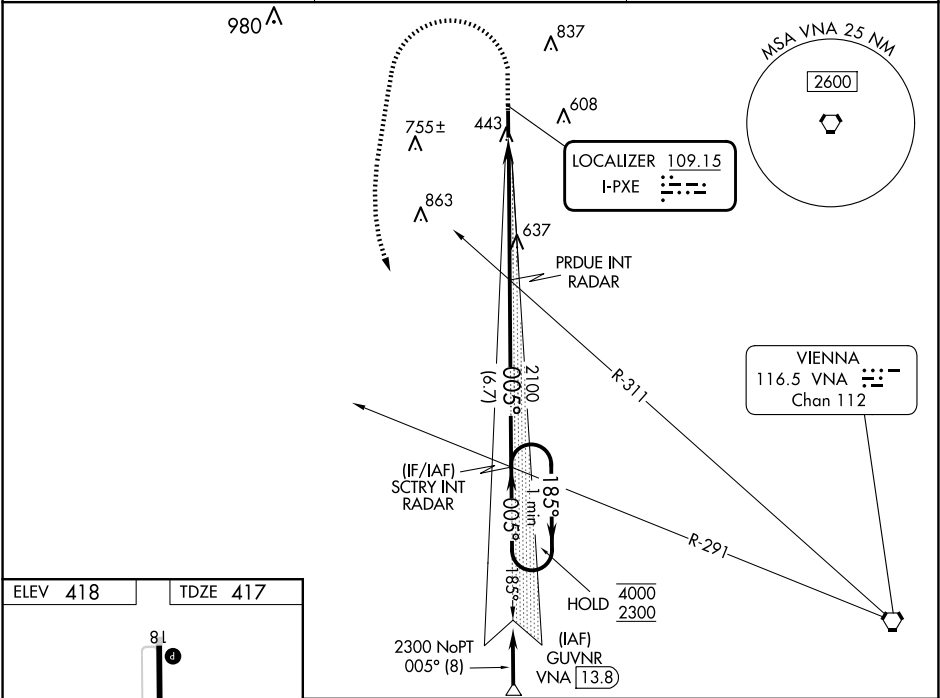
DME or RADAR required.

Autopilot coupled approach NA below 900. Rwy 36 helicopter visibility reduction below ¾ SM NA. Inop table does not apply to S-ILS-36. When local altimeter setting not received, use Middle Georgia Rgnl altimeter setting: increase all DA to 705 feet; increase all MDAs 40 feet and Circling visibility Cats C and D ¼ SM. For inop ALS, increase S-LOC 36 Cats A/B visibility to 1 SM and Cats C/D to 1¾ SM. For inop ALS when using Middle Georgia Rgnl altimeter setting, increase S-ILS all Cats visibility to ¾ SM and S-LOC 36 Cats A/B visibility to 1 SM.

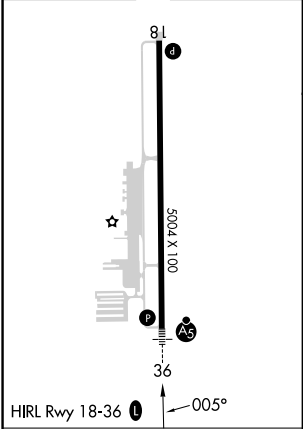


MISSED APPROACH: Climb to 1100 then climbing left turn to 2300 on heading 195° and VNA R-291 to SCTRY INT/ RADAR and hold.

AWOS-3 123.825	ATLANTA APP CON ★ 124.2 279.6	UNICOM 122.725 (CTAF) 0
--------------------------	---	-----------------------------------



ELEV 418	TDZE 417
----------	----------



FAF to MAP 5.2 NM					
Knots	60	90	120	150	180
Min:Sec	5:12	3:28	2:36	2:05	1:44

1100	2300	VNA R-291	SCTRY INT	VGSI and ILS glidepath not coincident (VGSI Angle 3.00/TCH 30).	One Minute Holding Pattern
↑	hdg 195°				
				PRDUE INT RADAR	SCTRY INT RADAR
				2100	185° → 4000 ← 005° 2300
				5.2 NM	6.7 NM
CATEGORY	A	B	C	D	
S-ILS 36	667-¾ 250 (300-¾)				
S-LOC 36	900-¾	483 (500-¾)	900-1	483 (500-1)	
CIRCLING	900-1	482 (500-1)	1140-2 722 (800-2)	1280-2¾ 862 (900-2¾)	

SE-4, 07 AUG 2025 to 04 SEP 2025

SE-4, 07 AUG 2025 to 04 SEP 2025