
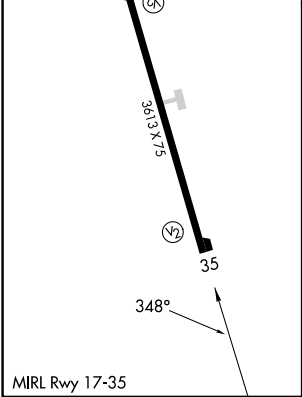
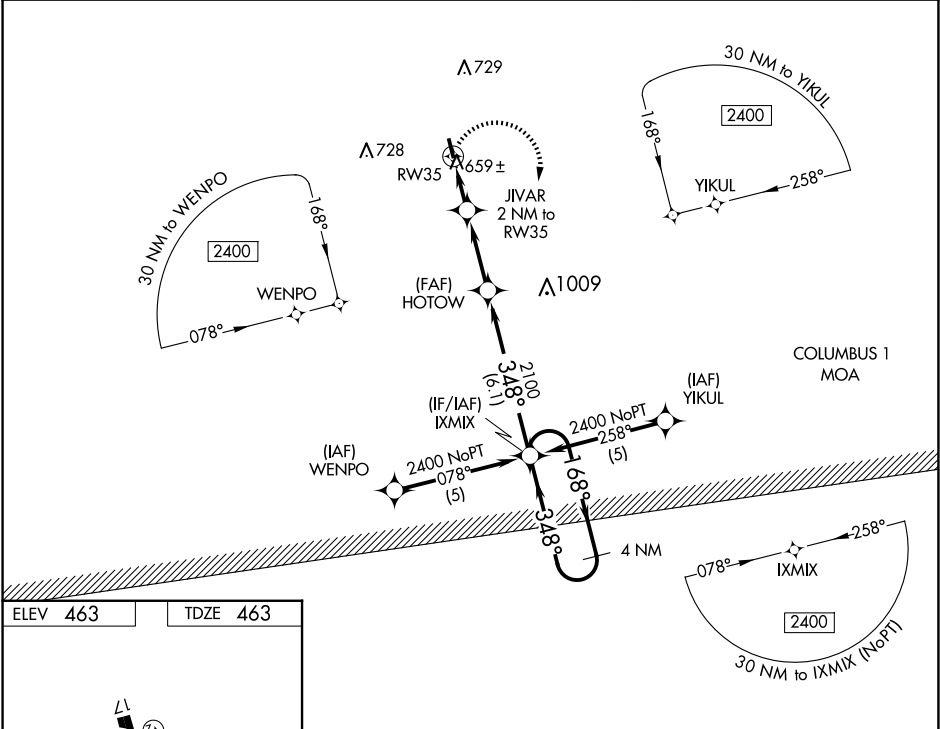





APP CRS	Rwy Idg	3613
348°	TDZE	463
	Apt Elev	463

RNAV (GPS) RWY 35

LAMAR COUNTY (M55)

RNP APCH.		MISSED APPROACH: Climbing right turn to 2400 direct IXMIX and hold.
	Use Columbus AFB altimeter setting; when not received use Golden Triangle Rgnl altimeter setting and increase all MDA 40 feet and Circling Cats C/D visibility ¼ mile. Procedure NA at night. Rwy 35 helicopter visibility reduction below 1 SM NA.	
KCBM ATIS★ 115.2 273.5		CTAF 122.9
COLUMBUS APP CON★ 126.075 239.25		



				Visual Segment - Obstacles.		4 NM Holding Pattern	
				HOTOW		IXMIX	
		JIVAR 2 NM to RW35				168° → 2400	
		RW35		2100		← 348°	
		1120					
→ 2 NM		3 NM		6.1 NM			
CATEGORY	A		B		C		D
LNAV MDA	1000-1 537 (600-1)				1000-1½ 537 (600-1½)		1000-1¾ 537 (600-1¾)
CIRCLING	1100-1 637 (700-1)				1180-2 717 (800-2)		1180-2¼ 717 (800-2¼)