

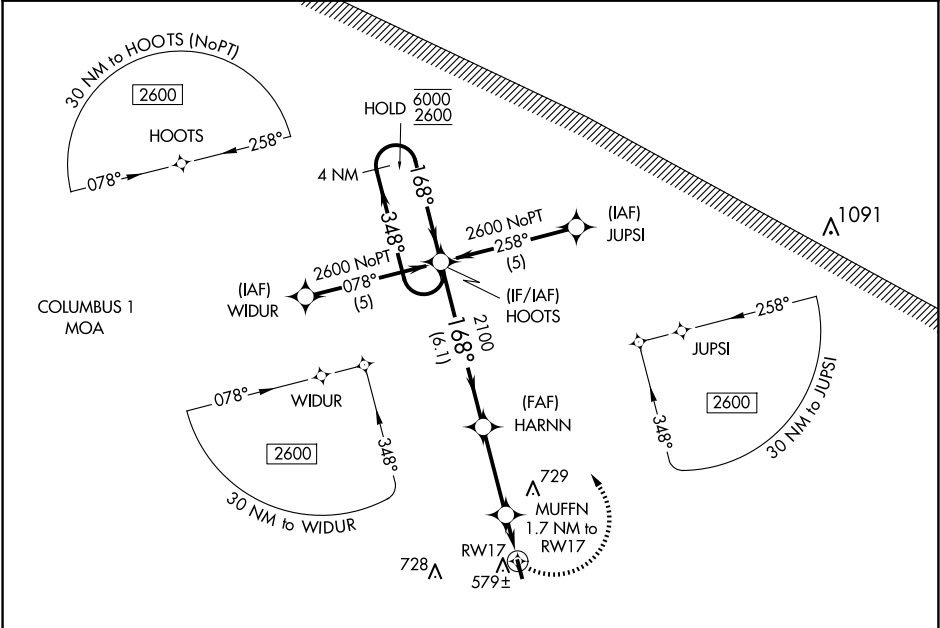
APP CRS	Rwy Idg	3613
168°	TDZE	463
	Apt Elev	463

RNAV (GPS) RWY 17

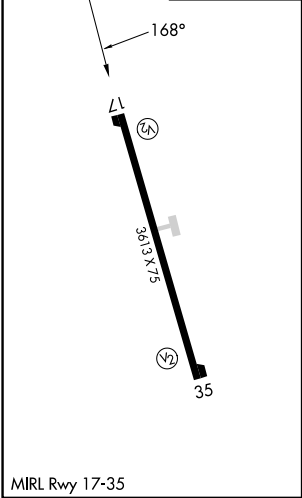
LAMAR COUNTY (M55)

RNP APCH.	MISSED APPROACH: Climbing left turn to 2600 direct HOOTs and hold.
<div><div>▼</div><div>NA</div></div> Rwy 17 helicopter visibility reduction below 1 SM NA. Use Columbus AFB altimeter setting. Procedure NA at night.	

KCBM ATIS★ 115.2 273.5	COLUMBUS APP CON★ 126.075 239.25	CTAF 122.9
---------------------------	-------------------------------------	---------------



ELEV 463	TDZE 463
----------	----------



4 NM Holding Pattern				2600	HOOTs
HOOTs					
HARNN				MUFFN 1.7 NM to RW17	
2100				RW17	
3.04° TCH 40				1040	
6.1 NM				3.3 NM	
1.7 NM					
CATEGORY	A	B	C	D	
LNAV MDA	960-1	497 (500-1)	960-1 3/8 497 (500-1 3/8)	960-1 1/2 497 (500-1 1/2)	
CIRCLING	1100-1	637 (700-1)	1180-2 717 (800-2)	1180-2 1/4 717 (800-2 1/4)	