

WAAS CH 49009 W05A	APP CRS 052°	Rwy Idg TDZE 89 Apt Elev 93	7100
--	------------------------	---	-------------

RNAV (GPS) RWY 5

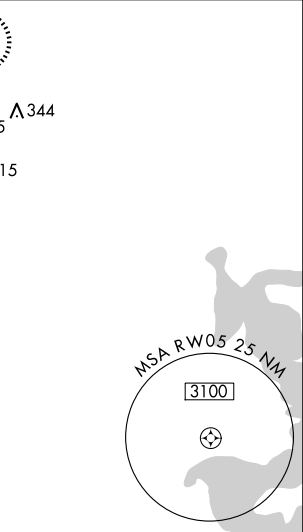
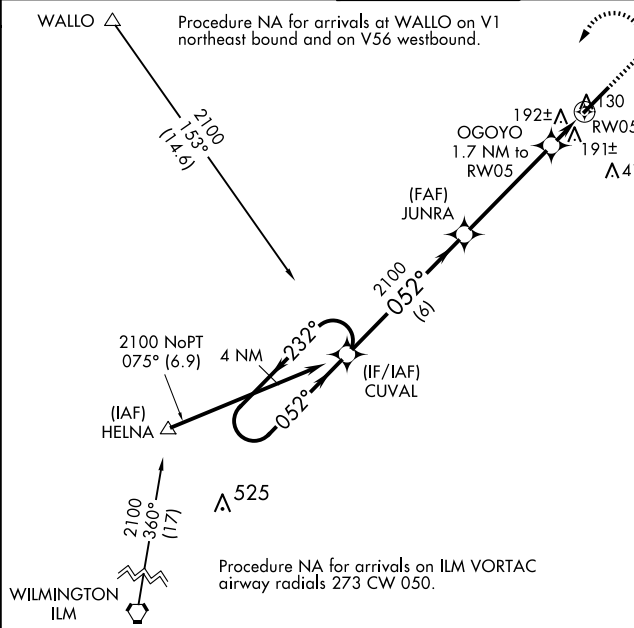
ALBERT J ELLIS (O.A.J)

Baro-VNAV NA when using Wilmington altimeter setting. For uncompensated Baro-VNAV systems, LNAV/VNAV NA below -1.5°C (5°F) or above 43°C (109°F). DME/DME RNP -0.3 NA. VDP NA with Wilmington altimeter setting. When local altimeter setting not received, use Wilmington altimeter setting and increase LPV DA to 383 feet; increase LNAV/VNAV DA to 559 feet and all visibilities $\frac{3}{8}$ SM. Increase all MDAs 100 feet and LNAV visibility Cat C/D $\frac{3}{8}$ SM, and Circling visibility Cat C/D $\frac{1}{4}$ SM. For inoperative MALSR, increase LNAV Cat C/D visibility to 1 mile. For inoperative MALSR, when using Wilmington altimeter setting, increase LPV all Cats visibility to $\frac{3}{8}$ mile, increase LNAV/VNAV all Cats to $\frac{1}{2}$ mile, and LNAV Cat C/D to $\frac{1}{8}$ mile.

MALSR

MISSED APPROACH:
Climb to 900 then climbing left turn to 2100 direct CUVAL and hold.

ATIS 124.475	WILMINGTON APP CON ★ 135.75 317.425	ELLIS TOWER ★ 132.65 (CTAF)	GND CON 125.4	CLNC DEL 121.4 257.6 (when twr closed)	UNICOM 122.95
------------------------	---	---------------------------------------	-------------------------	---	-------------------------



GP 3.00° TCH 55				
4 NM Holding Pattern				
CUVAL				
JUNRA				
2100				
OGOYO 1.7 NM to RW05				
*680				
*1 NM to RW05				
RW05				
*LNAV only.				
6 NM				
4.4 NM				
0.7 NM				
1 NM				
CATEGORY	A	B	C	D
LPV DA	289- $\frac{1}{2}$		200 (200- $\frac{1}{2}$)	
LNAV/ VNAV DA	465- $\frac{3}{4}$		376 (400- $\frac{3}{4}$)	
LNAV MDA	460- $\frac{1}{2}$	371 (400- $\frac{1}{2}$)	460- $\frac{5}{8}$	371 (400- $\frac{5}{8}$)
CIRCLING	540-1 447 (500-1)	560-1 467 (500-1)	720-1 $\frac{3}{4}$ 627 (700-1 $\frac{3}{4}$)	720-2 627 (700-2)

ELEV 93

TDZE 89

REIL Rwy 23

HIRL Rwy 5-23