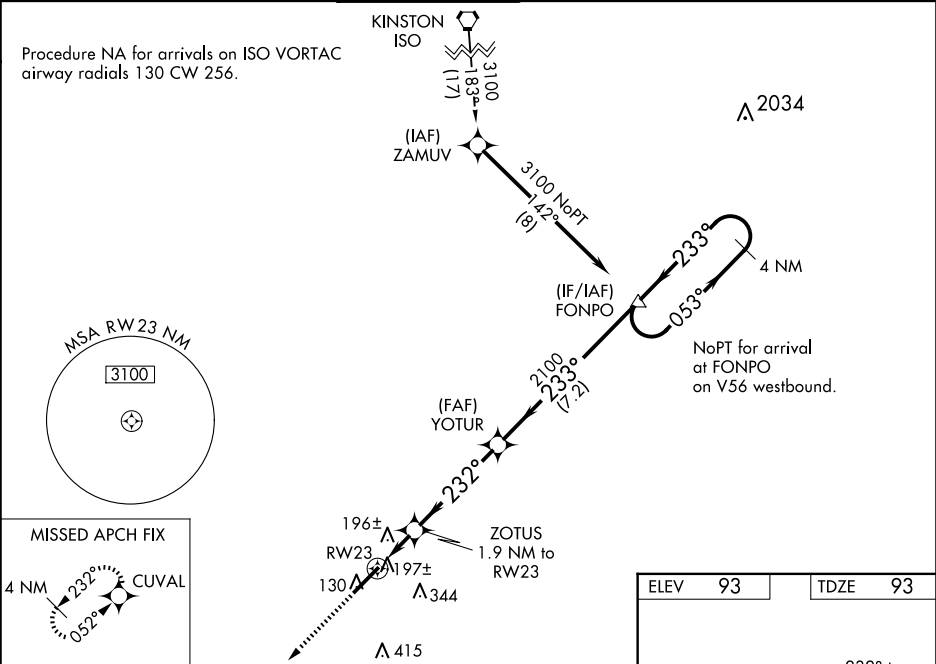


Baro-VNAV NA when using Wilmington altimeter setting. For uncompensated Baro-VNAV systems, LNAV/VNAV NA below -15°C (5°F) or above 43°C (109°F). DME/DME RNP-0.3 NA. VDP NA with Wilmington altimeter setting. When local altimeter setting not received, use Wilmington altimeter setting and increase LPV DA to 387 feet and all visibilities ½ SM. Increase LNAV/VNAV DA to 591 feet; increase all MDAs 100 feet and LNAV visibility Cat C/D ¾ SM, and Circling visibility Cat C/D ¼ SM.

MISSED APPROACH:
Climb to 2100 direct
CUVAL and hold.

| | | | | | |
|-----------------|--|----------------------------------|------------------|--|------------------|
| ATIS 124.475 | WILMINGTON APP CON ★ 135.75 317.425 | ELLIS TOWER ★ 132.65 (CTAF) 0 | GND CON 125.4 | CLNC DEL 121.4 257.6 (when twr closed) | UNICOM 122.95 |
|-----------------|--|----------------------------------|------------------|--|------------------|



2100

CUVAL

↑

✦

*LNAV only.

RW23

1 NM

0.9 NM

4.3 NM

7.2 NM

ZOTUS

1.9 NM to RW23

YOTUR

2100

FONPO

4 NM Holding Pattern

053°

233°

232°

233°

3100

GP 3.00°

TCH 47

740

2100

| CATEGORY | A | B | C | D |
|---------------|----------------------|----------------------|------------------------|----------------------|
| LPV DA | | 293-¾ | 200 (200-¾) | |
| LNAV/ VNAV DA | | 497-1⅜ | 404 (500-1⅜) | |
| LNAV MDA | | 460-1 | 367 (400-1) | |
| CIRCLING | 540-1 447 (500-1) | 560-1 467 (500-1) | 720-1¾ 627 (700-1¾) | 720-2 627 (700-2) |

