

| | | | |
|---------------|---------|----------|------|
| LOC/DME I-OAJ | APP CRS | Rwy Idg | 7100 |
| 108.7 | 052° | TDZE | 89 |
| Chan 24 | | Apt Elev | 93 |

ILS or LOC RWY 5

ALBERT J ELLIS (OAJ)

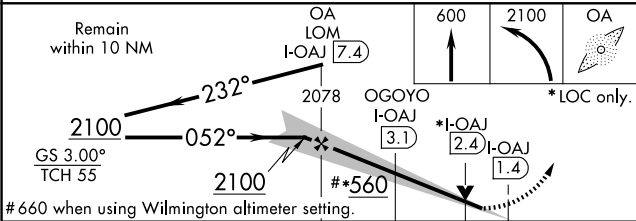
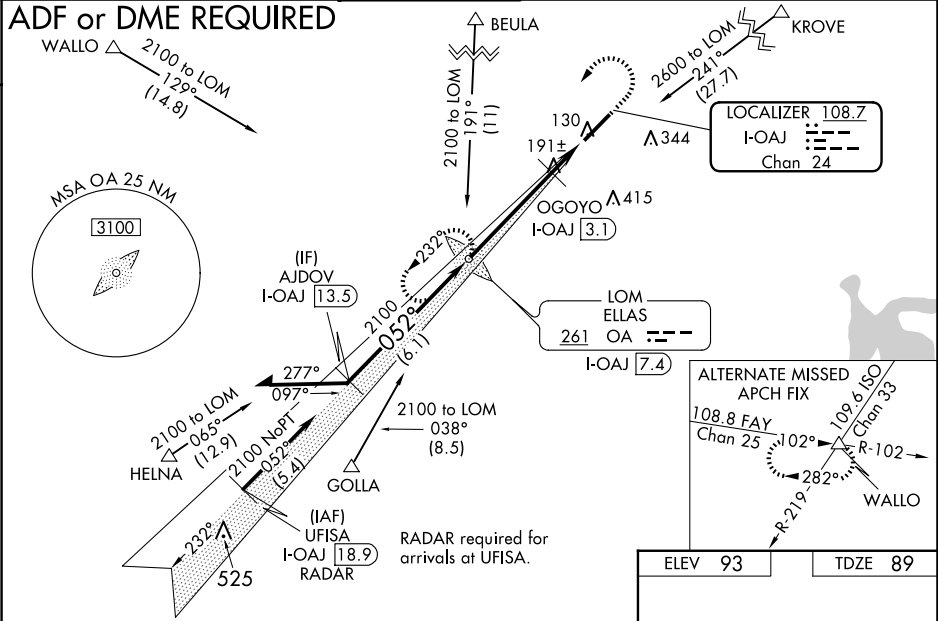
VDP NA with Wilmington altimeter setting. When local altimeter setting not received, use Wilmington altimeter setting and increase all DA to 382 feet; increase all MDAs 100 feet and visibility S-LOC 5 Cats C/D 3/4 SM and Circling Cats C/D 1/4 SM; OGOYO fix minimums: increase visibility S-LOC 5 Cats C/D 3/4 SM and Circling Cats C/D 1/4 SM. For inoperative MALSR, increase S-LOC 5 Cats C/D visibility to 1 3/4 mile, increase OGOYO fix minimums S-LOC 5 Cats C/D visibility to 1 mile. For inoperative MALSR when using Wilmington altimeter setting, increase S-ILS 5 all Cats visibility to 3/4 mile, increase S-LOC 5 Cats C/D visibility to 1 3/4 mile, increase OGOYO fix minimums S-LOC 5 Cats C/D visibility to 1 3/4 mile. ADF required.

MALSR

MISSED APPROACH:
Climb to 600 then climbing left turn to 2100 direct ELLAS LOM/I-OAJ 7.4 DME and hold.

| | | | | | |
|---------|----------------------|---------------|---------|----------------------------------|--------|
| ATIS | WILMINGTON APP CON ★ | ELLIS TOWER ★ | GND CON | CLNC DEL | UNICOM |
| 124.475 | 135.75 317.425 | 132.65 (CTAF) | 125.4 | 121.4 257.6 (when twr closed) | 122.95 |

ADF or DME REQUIRED



| CATEGORY | A | B | C | D |
|-----------------------------------|----------------------|----------------------|------------------------------|----------------------|
| S-ILS 5 | 289-1/2 | | 200 (200-1/2) | |
| S-LOC 5 | 560-1/2 | 471 (500-1/2) | 560-1 | 471 (500-1) |
| CIRCLING | 560-1 | 467 (500-1) | 720-1 3/4 627 (700-1 3/4) | 720-2 627 (700-2) |
| OGOYO FIX MINIMUMS (DME REQUIRED) | | | | |
| S-LOC 5 | 460-1/2 | 371 (400-1/2) | 460-5/8 | 371 (400-5/8) |
| CIRCLING | 540-1 447 (500-1) | 560-1 467 (500-1) | 720-1 3/4 627 (700-1 3/4) | 720-2 627 (700-2) |

