

WAAS CH <b>56602</b> <b>W25A</b>	APP CRS <b>248°</b>	Rwy Ldg <b>5004</b> TDZE <b>949</b> Apt Elev <b>949</b>
--	------------------------	---

RNAV (GPS) RWY 25

GREENE COUNTY/LEWIS A JACKSON RGNL (GDK)

RNP APCH - GPS.

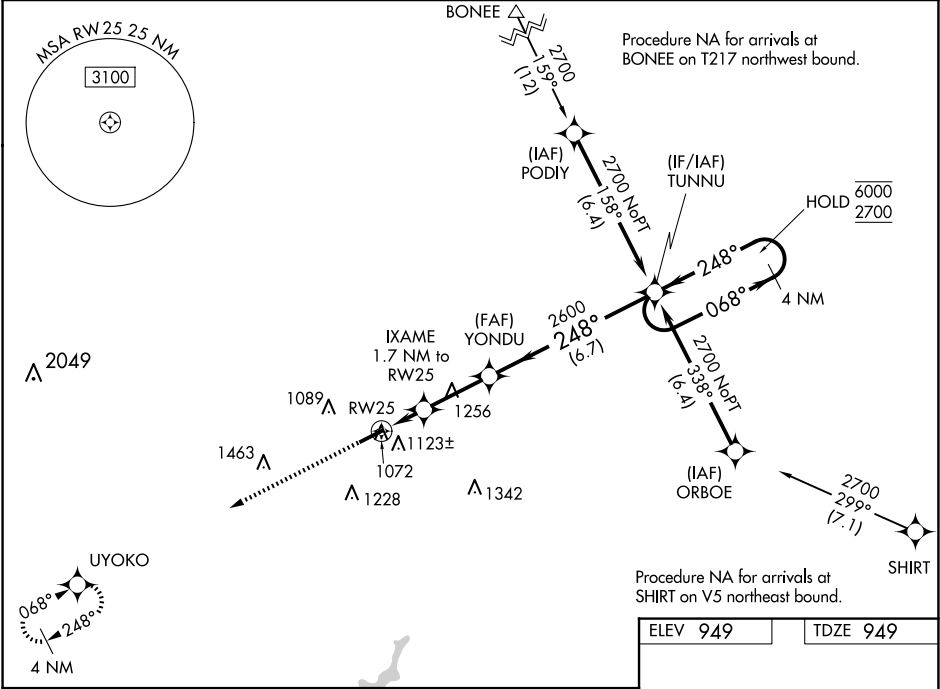
▼

▲

For uncompensated Baro-VNAV systems, LNAV/VNAV NA below -16°C or above 54°C.  
Rwy 25 helicopter visibility reduction below ¾ SM NA. VDP and Baro-VNAV NA when using Dayton/Wright Brothers altimeter setting: increase LPV DA to 1249 feet; increase LNAV/VNAV DA to 1252 feet; increase all MDA 40 feet and LNAV visibility Cat C ½ SM.

MISSED APPROACH:  
Climb to 2700 direct UYOKO and hold.

AWOS-3 <b>118.525</b>	COLUMBUS APP CON <b>118.85 269.275</b>	UNICOM <b>122.725 (CTAF) 0</b>
--------------------------	---	-----------------------------------



2700 ↑	UYOKO ✧	4 NM Holding Pattern			

ELEV 949 TDZE 949

5004X75  
248°

MIRL Rwy 7-25 0  
REIL Rwy 7 and 25 0