

WAAS CH 86524 W27A	APP CRS 268°	Rwy Ldg 5000 TDZE 2925 Apt Elev 2933
--	------------------------	---

RNAV (GPS) RWY 27

GARRETT COUNTY (2G4)

RNP APCH - GPS.

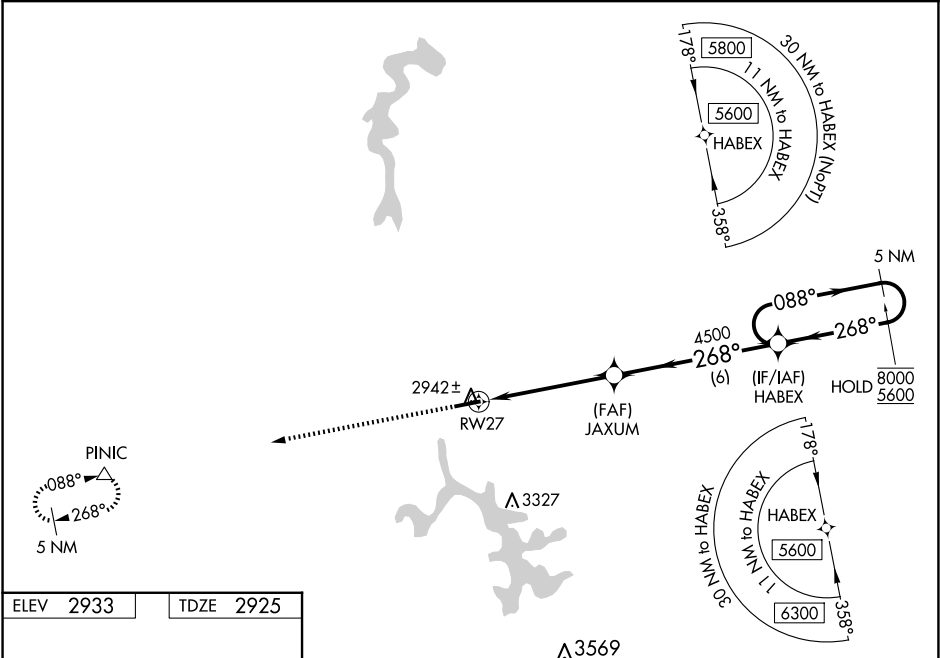
▼

▲

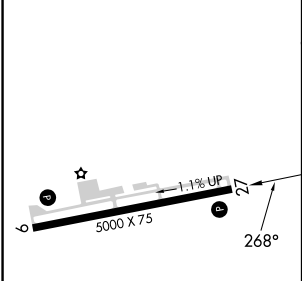
For uncompensated Baro-VNAV systems, LNAV/VNAV NA below -20°C or above 54°C. Baro-VNAV and VDP NA when using MGW altimeter setting. When local altimeter setting not received, use MGW altimeter setting and increase LPV DA to 3425 feet and all visibilities ¾ SM. Increase LNAV/VNAV DA to 3475 feet and all visibilities ¾ SM; increase all MDAs 300 feet and LNAV visibility Cat C ¾ SM, and Circling visibility Cat C 1 SM.

MISSED APPROACH:
Climb 5700 direct
PINIC and hold.

AWOS-3 120.125	CLARKSBURG APP CON ★ 119.425 284.65	UNICOM 123.0 (CTAF) 0
--------------------------	---	---------------------------------



ELEV 2933	TDZE 2925
-----------	-----------



5700

PINIC

▲

△

0.9 NM to RW27

RW27

0.9

4.1 NM

6 NM

JAXUM

4500

268°

4500

HABEX

088°

268°

8000

5600

5 NM Holding Pattern

GP 3.00° TCH 42

CATEGORY	A	B	C	D
LPV DA	3125-1	200 (200-1)		NA
LNAV/VNAV DA	3175-1	250 (300-1)		NA
LNAV MDA	3200-1	275 (300-1)		NA
<div> <div> <div></div> <div>CIRCLING</div> </div> <div>3380-1 447 (500-1)</div> </div>	<div>3400-1 467 (500-1)</div>	<div>3500-1½ 567 (600-1½)</div>	NA	

REIL Rwy 9 and 27 0
MIRL Rwy 9-27 0