


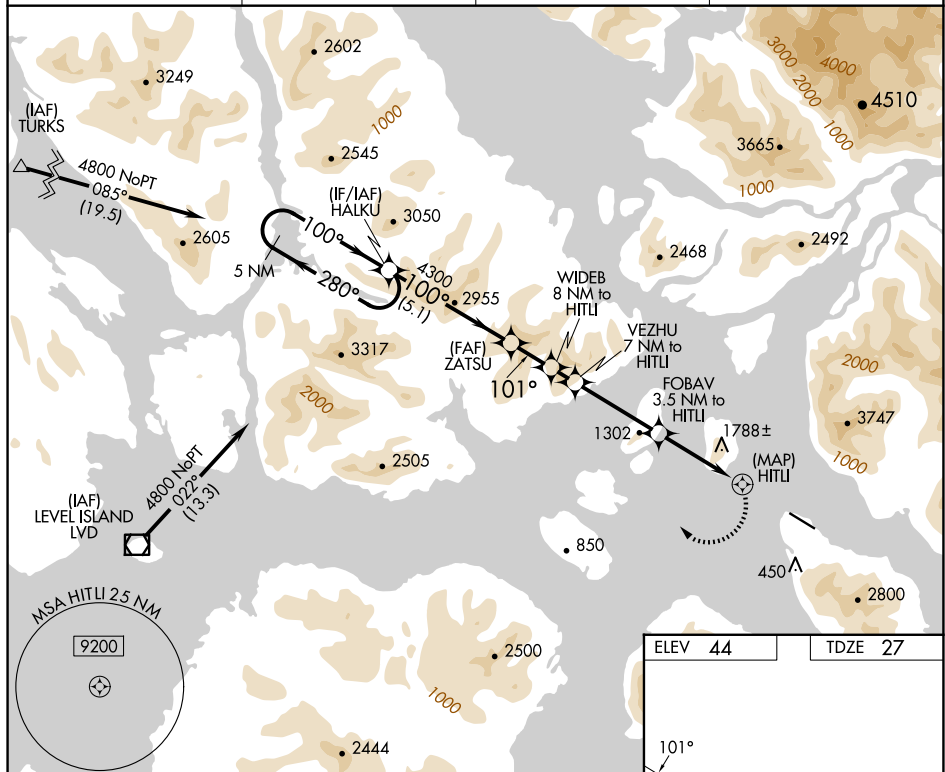


RNAV (GPS) RWY 10
WRANGELL (WRG) (PAWG)

	Circling NA South of Rwy 10-28.
	Procedure NA at night.
 -4°C	Helicopter visibility reduction below 1 SM NA.

MISSED APPROACH:
Climbing right turn to 4800
direct HALKU and hold.

AWOS-3P 128.5	ANCHORAGE CENTER 118.0	SITKA RADIO 122.45	CTAF 122.6 0
-------------------------	----------------------------------	------------------------------	------------------------



5 NM Holding Pattern
4800
280°
100°
HALKU
ZATSU
WIDEB 8 NM to HITLI
VEZHU 7 NM to HITLI
FOBAV 3.5 NM to HITLI
HITLI
4300
3780
3400
2120
3.49°
TCH 52
5.1 NM
1.7 NM
1 NM
3.5 NM
3.5 NM
2 NM

VGSI and descent angles not coincident (VGSI Angle 3.00/TCH 52).

4800
HALKU

0.3% Up
6000 x 1:50
321
28

CATEGORY	A	B	C	D
INAV MDA	2080-2½	2053 (2100-2½)	2080-3 2053 (2100-3)	NA
CIRCLING	2080-2½	2036 (2100-2½)	2500-3 2456 (2500-3)	NA

REIL Rwy 10 and 28
HIRL Rwy 10-28

AK 07 AUG 2025 to 02 OCT 2025