

WAAS CH <b>53727</b> <b>W08A</b>	APP CRS <b>081°</b>	Rwy Idg TDZE Apt Elev	<b>5003</b> <b>201</b> <b>201</b>
--	------------------------	-----------------------------	---

RNAV (GPS) RWY 8

BAXLEY MUNI (BHC)

RNP APCH-GPS.

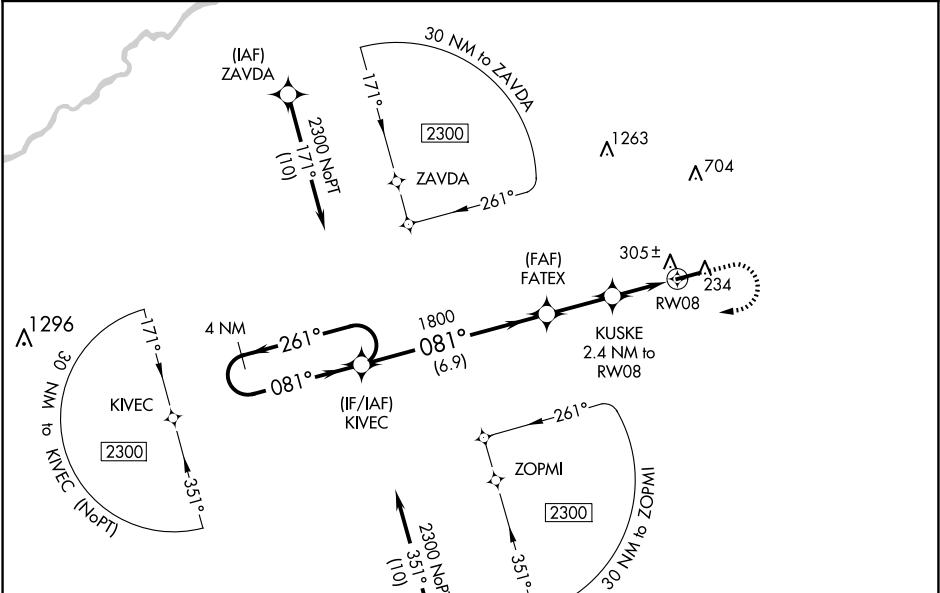
▼

▲ NA

Baro-VNAV NA when using Alma altimeter setting. For uncompensated Baro-VNAV systems, LNAV/VNAV NA below -15°C or above 54°C. When local altimeter setting not received, use Alma altimeter setting: increase LPV DA to 513 feet; increase LNAV/VNAV DA to 515 feet; increase all MDAs 40 feet and visibility Cat C ¼ SM and visibility Cat D ¼ SM. Helicopter visibility reduction below ¾ SM NA.

MISSED APPROACH:  
Climb to 1200 then  
climbing right turn  
to 2300 direct  
KIVEC and hold.

AWOS-3PT <b>118.2</b>	JACKSONVILLE CENTER <b>127.575 269.025</b>	UNICOM <b>122.8</b> (CTAF) <b>0</b>
--------------------------	---	--



4 NM Holding Pattern

VGSI and RNAV glidepath not coincident (VGSI Angle 3.00/TCH 31).

1200 2300 KIVEC

2300 ← 261° 081° → 081° 1800 KUSKE 2.4 NM to RW08

GP 3.00° TCH 59

\*1020

6.9 NM 2.4 NM 2.4 NM

RW08

\*LNAV only.

CATEGORY	A	B	C	D
LPV DA		484-1	283 (300-1)	
LNAV/VNAV DA		486-1	285 (300-1)	
LNAV MDA		560-1	359 (400-1)	
CIRCLING	620-1 419 (500-1)	700-1 499 (500-1)	700-1½ 499 (500-1½)	1060-2¾ 859 (900-2¾)

ELEV 201 TDZE 201

MIRL Rwy 8-26 **0**

SE-4, 07 AUG 2025 to 04 SEP 2025

SE-4, 07 AUG 2025 to 04 SEP 2025