

APP CRS <b>262°</b>	Rwy Ldg TDZE Apt Elev	<b>3881</b> <b>53</b> <b>53</b>
------------------------	-----------------------------	---------------------------------------


RNAV (GPS) RWY 26  
SOUTH JERSEY RGNL (VAY)

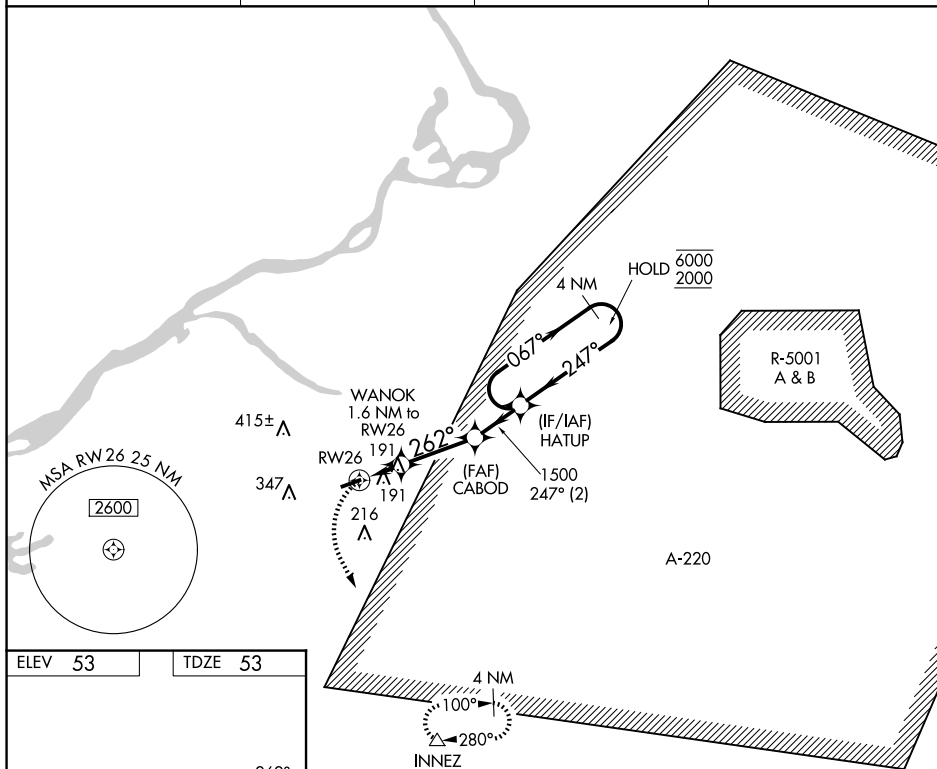
RNP APCH.



Rwy 26 helicopter visibility reduction below 1 SM NA. Procedure NA at night.

MISSED APPROACH:  
Climbing left turn to 2000  
direct INNEZ and hold.

ASOS <b>119.325</b>	MC GUIRE APP CON <b>126.475 363.8</b>	UNICOM <b>122.8</b> (CTAF)	<b>123.3</b> 
------------------------	--	-------------------------------	--



③

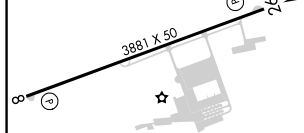


Diagram of the HATUP 4 NM Holding Pattern. The pattern is a racetrack shape. The inbound leg is 1.5 NM from CABOD, heading 247°. The outbound leg is 1.5 NM from CABOD, heading 067°. The holding pattern is 4 NM. The pattern is located 1.6 NM from WANOK, 1.6 NM from RW26, and 2.8 NM from the start of the runway. The diagram also shows the runway (RW26) and the holding pattern (HATUP).

CATEGORY	A	B	C	D
RNAV MDA	480-1	427 (500-1)	NA	
CIRCLING	520-1 467 (500-1)	540-1 487 (500-1)	NA	

MIRL Rwy 8-26 **L**

REIL Rwys 8 and 26 (L)

MOUNT HOLLY, NEW JERSEY

Amdt 1D 09SEP21

SOUTH JERSEY RGNL (VAY)

RNAV (GPS) RWY 26

39°57'N-74°51'W

NE-2, 07 AUG 2025 to 04 SEP 2025